

SLC6A9 Rabbit pAb

Catalog No.: A16203 **2 Publications**

Basic Information

Observed MW

75kDa

Calculated MW

78kDa

Category

Primary antibody

Applications

ELISA, WB

Cross-Reactivity

Human, Mouse, Rat

Background

The amino acid glycine acts as an inhibitory neurotransmitter in the central nervous system. The protein encoded by this gene is one of two transporters that stop glycine signaling by removing it from the synaptic cleft.

Recommended Dilutions

WB 1:1000 - 1:5000

Immunogen Information

Gene ID

6536

Swiss Prot

P48067

Immunogen

Recombinant fusion protein containing a sequence corresponding to amino acids 1-110 of human SLC6A9 (NP_964012.2).

Synonyms

GLYT1; GCENSG; SLC6A9

Contact

 | 400-999-6126

 | cn.market@abclonal.com.cn

 | www.abclonal.com.cn

Product Information

Source

Rabbit

Isotype

IgG

Purification

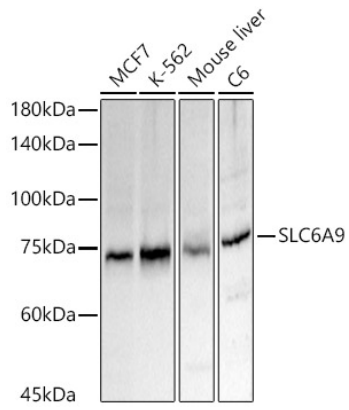
Affinity purification

Storage

Store at -20°C. Avoid freeze / thaw cycles.

Buffer: PBS with 0.05% proclin300, 50% glycerol, pH7.3.

Validation Data



Western blot analysis of various lysates, using SLC6A9 antibody (A16203) at 1:2000 dilution.
Secondary antibody: HRP Goat Anti-Rabbit IgG (H+L) (AS014) at 1:10000 dilution.
Lysates/proteins: 25µg per lane.
Blocking buffer: 3% nonfat dry milk in TBST.
Detection: ECL Basic Kit (RM00020).
Exposure time: 10s.