

SDHAF2 Rabbit pAb

Catalog No.: A16204 **1 Publications**

Basic Information

Observed MW

15kDa

Calculated MW

20kDa

Category

Primary antibody

Applications

ELISA, WB

Cross-Reactivity

Human, Mouse

Background

This gene encodes a mitochondrial assembly factor needed for the flavination of a succinate dehydrogenase complex subunit (SDHA), which is required for activity of the succinate dehydrogenase complex. Mutations in this gene are associated with paraganglioma.

Recommended Dilutions

WB 1:500 - 1:2000

Immunogen Information

Gene ID

54949

Swiss Prot

Q9NX18

Immunogen

Recombinant fusion protein containing a sequence corresponding to amino acids 1-166 of human SDHAF2 (NP_060311.1).

Synonyms

PGL2; SDH5; hSDH5; C11orf79; SDHAF2

Contact

☎ | 400-999-6126

✉ | cn.market@abclonal.com.cn

🌐 | www.abclonal.com.cn

Product Information

Source

Rabbit

Isotype

IgG

Purification

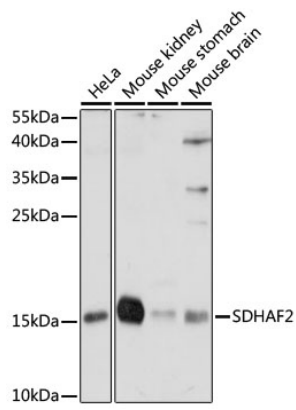
Affinity purification

Storage

Store at -20°C. Avoid freeze / thaw cycles.

Buffer: PBS with 0.01% thimerosal, 50% glycerol, pH7.3.

Validation Data



Western blot analysis of various lysates using SDHAF2 Rabbit pAb (A16204) at 1:1000 dilution.
Secondary antibody: HRP Goat Anti-Rabbit IgG (H+L) (AS014) at 1:10000 dilution.
Lysates/proteins: 25 μ g per lane.
Blocking buffer: 3% nonfat dry milk in TBST.
Detection: ECL Basic Kit (RM00020).
Exposure time: 10s.