

AQP2 Rabbit pAb

Catalog No.: A16209 **4 Publications**

Basic Information

Observed MW

26kDa

Calculated MW

29kDa

Category

Primary antibody

Applications

ELISA, WB, IHC-P, IF/ICC

Cross-Reactivity

Human, Mouse, Rat

Background

This gene encodes a water channel protein located in the kidney collecting tubule. It belongs to the MIP/aquaporin family, some members of which are clustered together on chromosome 12q13. Mutations in this gene have been linked to autosomal dominant and recessive forms of nephrogenic diabetes insipidus.

Recommended Dilutions

WB	1:500 - 1:1000
IHC-P	1:50 - 1:100
IF/ICC	1:50 - 1:200

Immunogen Information

Gene ID

359

Swiss Prot

P41181

Immunogen

A synthetic peptide corresponding to a sequence within amino acids 147-271 of human AQP2 (NP_000477.1).

Synonyms

NDI2; AQP-CD; WCH-CD; AQP2

Contact

☎ | 400-999-6126

✉ | cn.market@abclonal.com.cn

🌐 | www.abclonal.com.cn

Product Information

Source

Rabbit

Isotype

IgG

Purification

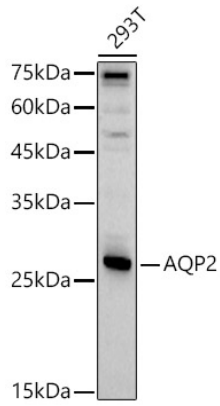
Affinity purification

Storage

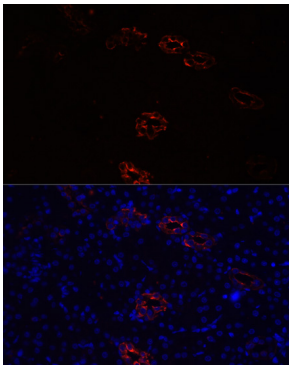
Store at -20°C. Avoid freeze / thaw cycles.

Buffer: PBS with 0.05% proclin300, 50% glycerol, pH7.3.

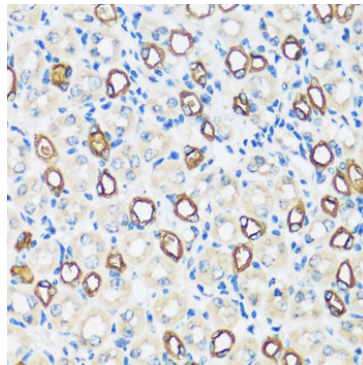
Validation Data



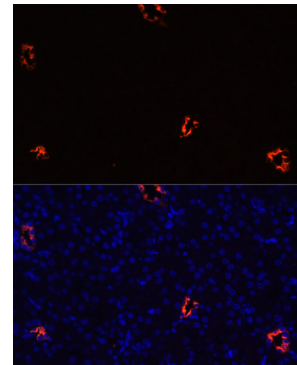
Western blot analysis of lysates from 293T cells, using AQP2 Rabbit pAb (A16209) at 1:1000 dilution.
Secondary antibody: HRP Goat Anti-Rabbit IgG (H+L) (AS014) at 1:10000 dilution.
Lysates/proteins: 25µg per lane.
Blocking buffer: 3% nonfat dry milk in TBST.
Detection: ECL Basic Kit (RM00020).
Exposure time: 90s.



Immunofluorescence analysis of paraffin-embedded rat kidney using AQP2 Rabbit pAb (A16209) at dilution of 1:100. Secondary antibody: Cy3 Goat Anti-Rabbit IgG (H+L) (AS007) at 1:500 dilution. Blue: DAPI for nuclear staining.



Immunohistochemistry analysis of paraffin-embedded mouse kidney using AQP2 Rabbit pAb (A16209) at dilution of 1:100 (40x lens). Perform microwave antigen retrieval with 10 mM PBS buffer pH 7.2 before commencing with IHC staining protocol.



Immunofluorescence analysis of paraffin-embedded mouse kidney using AQP2 Rabbit pAb (A16209) at dilution of 1:100. Secondary antibody: Cy3 Goat Anti-Rabbit IgG (H+L) (AS007) at 1:500 dilution. Blue: DAPI for nuclear staining.