

PGRMC2 Rabbit pAb

Catalog No.: A16216

Basic Information

Observed MW

23kDa

Calculated MW

24kDa

Category

Primary antibody

Applications

ELISA, WB, IF/ICC

Cross-Reactivity

Human, Mouse

Background

Enables heme binding activity. Involved in adipose tissue development. Located in endoplasmic reticulum and nuclear envelope.

Recommended Dilutions

| | |
|---------------|----------------|
| WB | 1:500 - 1:2000 |
| IF/ICC | 1:50 - 1:200 |

Immunogen Information

Gene ID

10424

Swiss Prot

O15173

Immunogen

A synthetic peptide corresponding to a sequence within amino acids 1-50 of human PGRMC2 (NP_006311.3).

Synonyms

DG6; PMBP; PGRMC2

Contact

 | 400-999-6126

 | cn.market@abclonal.com.cn

 | www.abclonal.com.cn

Product Information

Source

Rabbit

Isotype

IgG

Purification

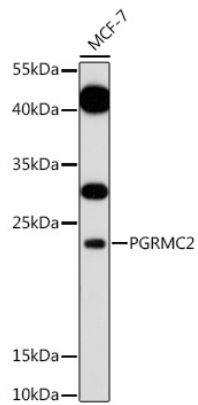
Affinity purification

Storage

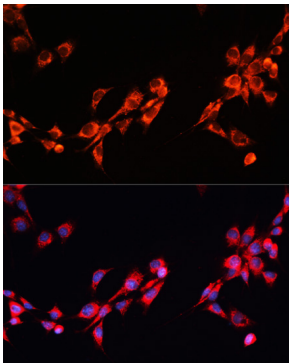
Store at -20°C. Avoid freeze / thaw cycles.

Buffer: PBS with 0.01% thimerosal, 50% glycerol, pH7.3.

Validation Data



Western blot analysis of lysates from MCF-7 cells, using PGRMC2 Rabbit pAb (A16216) at 1:1000 dilution.
Secondary antibody: HRP Goat Anti-Rabbit IgG (H+L) (AS014) at 1:10000 dilution.
Lysates/proteins: 25µg per lane.
Blocking buffer: 3% nonfat dry milk in TBST.
Detection: ECL Basic Kit (RM00020).
Exposure time: 5min.



Immunofluorescence analysis of NIH/3T3 cells using PGRMC2 Rabbit pAb (A16216) at dilution of 1:100. Secondary antibody: Cy3 Goat Anti-Rabbit IgG (H+L) (AS007) at 1:500 dilution. Blue: DAPI for nuclear staining.