

AICDA Rabbit pAb

Catalog No.: A16217 **6 Publications**

Basic Information

Observed MW

24kDa

Calculated MW

24kDa

Category

Primary antibody

Applications

ELISA, WB

Cross-Reactivity

Human, Rat

Background

Enables cytidine deaminase activity. Involved in cytidine deamination and isotype switching. Acts upstream of or within cellular response to lipopolysaccharide and defense response to bacterium. Predicted to be part of protein-containing complex. Predicted to be active in P-body and nucleus. Is expressed in several structures, including immune system; lower urogenital tract; lung; reproductive system; and urethra epithelium. Human ortholog(s) of this gene implicated in hyperimmunoglobulin syndrome and immunodeficiency with hyper-IgM type 2. Orthologous to human AICDA (activation induced cytidine deaminase).

Recommended Dilutions

WB 1:500 - 1:2000

Immunogen Information

Gene ID

11628

Swiss Prot

Q9WVE0

Immunogen

A synthetic peptide corresponding to a sequence within amino acids 1-100 of mouse AICDA (Q9WVE0).

Synonyms

Aid; Arp2; AICDA

Contact

☎ | 400-999-6126

✉ | cn.market@abclonal.com.cn

🌐 | www.abclonal.com.cn

Product Information

Source

Rabbit

Isotype

IgG

Purification

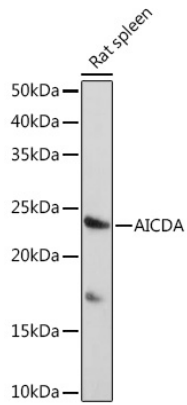
Affinity purification

Storage

Store at -20°C. Avoid freeze / thaw cycles.

Buffer: PBS with 0.01% thimerosal, 50% glycerol, pH7.3.

Validation Data



Western blot analysis of lysates from Rat spleen, using AICDA Rabbit pAb (A16217) at 1:1000 dilution.
Secondary antibody: HRP Goat Anti-Rabbit IgG (H+L) (AS014) at 1:10000 dilution.
Lysates/proteins: 25µg per lane.
Blocking buffer: 3% nonfat dry milk in TBST.
Detection: ECL Basic Kit (RM00020).
Exposure time: 90s.