

Casein Kinase 1 alpha (CSNK1A1) Rabbit pAb

Catalog No.: A16225

1 Publications

Basic Information

Observed MW

38kDa

Calculated MW

39kDa

Category

Primary antibody

Applications

ELISA, WB, IHC-P, IF/ICC

Cross-Reactivity

Human, Mouse, Rat

Background

Enables protein serine/threonine kinase activity. Involved in several processes, including negative regulation of canonical Wnt signaling pathway; peptidyl-serine phosphorylation; and positive regulation of proteasomal ubiquitin-dependent protein catabolic process. Located in centrosome; cytosol; and nuclear speck. Part of beta-catenin destruction complex. Colocalizes with keratin filament and mRNA cleavage and polyadenylation specificity factor complex. Biomarker of Alzheimer's disease and inclusion body myositis.

Recommended Dilutions

WB	1:500 - 1:2000
IHC-P	1:50 - 1:200
IF/ICC	1:50 - 1:200

Immunogen Information

Gene ID

1452

Swiss Prot

P48729

Immunogen

A synthetic peptide corresponding to a sequence within amino acids 238-337 of human Casein Kinase 1 alpha (CSNK1A1) (NP_001883.4).

Synonyms

CK1; CK1a; CKIa; HLCDGP1; PRO2975; HEL-S-77p; Casein Kinase 1 alpha (CSNK1A1)

Contact

☎	400-999-6126
✉	cn.market@abclonal.com.cn
🌐	www.abclonal.com.cn

Product Information

Source

Rabbit

Isotype

IgG

Purification

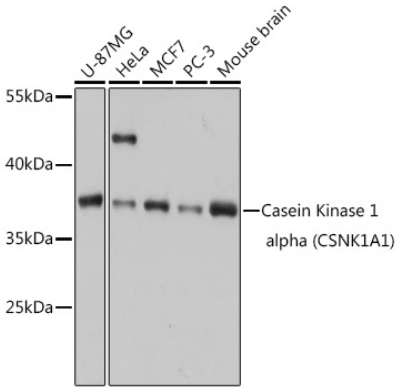
Affinity purification

Storage

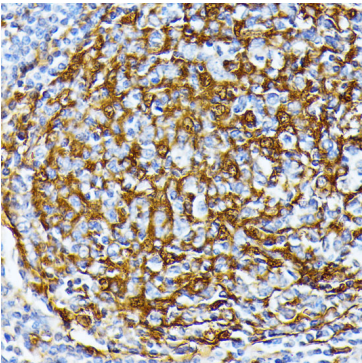
Store at -20°C. Avoid freeze / thaw cycles.

Buffer: PBS with 0.01% thimerosal, 50% glycerol, pH7.3.

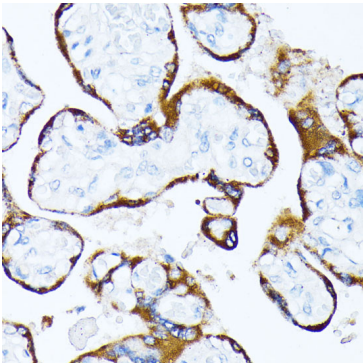
Validation Data



Western blot analysis of various lysates using Casein Kinase 1 alpha (CSNK1A1) Rabbit pAb (A16225) at 1:1000 dilution.
Secondary antibody: HRP Goat Anti-Rabbit IgG (H+L) (AS014) at 1:10000 dilution.
Lysates/proteins: 25µg per lane.
Blocking buffer: 3% nonfat dry milk in TBST.
Detection: ECL Basic Kit (RM00020).
Exposure time: 1s.



Immunohistochemistry analysis of Casein Kinase 1 alpha (CSNK1A1) in paraffin-embedded human tonsil using Casein Kinase 1 alpha (CSNK1A1) Rabbit pAb (A16225) at dilution of 1:100 (40x lens).Perform microwave antigen retrieval with 10 mM PBS buffer pH 7.2 before commencing with IHC staining protocol.



Immunohistochemistry analysis of Casein Kinase 1 alpha (CSNK1A1) in paraffin-embedded human placenta using Casein Kinase 1 alpha (CSNK1A1) Rabbit pAb (A16225) at dilution of 1:100 (40x lens).Perform microwave antigen retrieval with 10 mM PBS buffer pH 7.2 before commencing with IHC staining protocol.