

NTN1 Rabbit pAb

Catalog No.: A16236 **1 Publications**

Basic Information

Observed MW

70kDa

Calculated MW

68kDa

Category

Primary antibody

Applications

ELISA, WB

Cross-Reactivity

Human

Background

Netrin is included in a family of laminin-related secreted proteins. The function of this gene has not yet been defined; however, netrin is thought to be involved in axon guidance and cell migration during development. Mutations and loss of expression of netrin suggest that variation in netrin may be involved in cancer development.

Recommended Dilutions

WB 1:500 - 1:1000

Immunogen Information

Gene ID

9423

Swiss Prot

O95631

Immunogen

A synthetic peptide corresponding to a sequence within amino acids 500-600 of human NTN1 (NP_004813.2).

Synonyms

NET1; MRMV4; NTN1L; NTN1

Contact

 | 400-999-6126

 | cn.market@abclonal.com.cn

 | www.abclonal.com.cn

Product Information

Source

Rabbit

Isotype

IgG

Purification

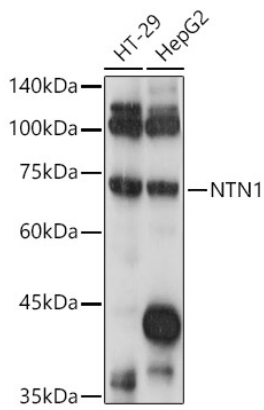
Affinity purification

Storage

Store at -20°C. Avoid freeze / thaw cycles.

Buffer: PBS with 0.05% proclin300, 50% glycerol, pH7.3.

Validation Data



Western blot analysis of extracts of various cell lines, using NTN1 antibody (A16236) at 1:1000 dilution.
Secondary antibody: HRP Goat Anti-Rabbit IgG (H+L) (AS014) at 1:10000 dilution.
Lysates/proteins: 25µg per lane.
Blocking buffer: 3% nonfat dry milk in TBST.
Detection: ECL Basic Kit (RM00020).
Exposure time: 1s.