

NDUFA11 Rabbit pAb

Catalog No.: A16239 **5 Publications**

Basic Information

Observed MW

15kDa

Calculated MW

15kDa

Category

Primary antibody

Applications

ELISA, WB

Cross-Reactivity

Mouse

Background

This gene encodes a subunit of the membrane-bound mitochondrial complex I. Complex I is composed of numerous subunits and functions as the NADH-ubiquinol reductase of the mitochondrial electron transport chain. Mutations in this gene are associated with severe mitochondrial complex I deficiency. Alternate splicing results in multiple transcript variants.

Recommended Dilutions

WB 1:500 - 1:2000

Immunogen Information

Gene ID

126328

Swiss Prot

Q86Y39

Immunogen

A synthetic peptide corresponding to a sequence within amino acids 1-100 of human NDUFA11 (NP_783313.1).

Synonyms

B14.7; MC1DN14; CI-B14.7; NDUFA11

Contact

 | 400-999-6126

 | cn.market@abclonal.com.cn

 | www.abclonal.com.cn

Product Information

Source

Rabbit

Isotype

IgG

Purification

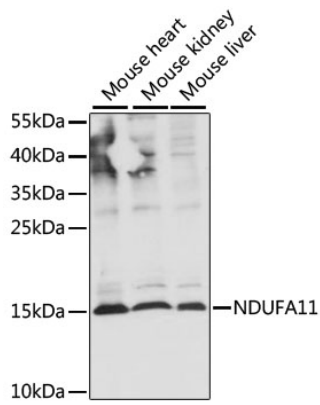
Affinity purification

Storage

Store at -20°C. Avoid freeze / thaw cycles.

Buffer: PBS with 0.01% thimerosal, 50% glycerol, pH7.3.

Validation Data



Western blot analysis of various lysates using NDUFA11 Rabbit pAb (A16239) at 1:1000 dilution.
Secondary antibody: HRP Goat Anti-Rabbit IgG (H+L) (AS014) at 1:10000 dilution.
Lysates/proteins: 25µg per lane.
Blocking buffer: 3% nonfat dry milk in TBST.
Detection: ECL Basic Kit (RM00020).
Exposure time: 5s.