

Lipoprotein lipase (LPL) Rabbit pAb

Catalog No.: A16252 **11 Publications**

Basic Information

Observed MW

53kDa

Calculated MW

53kDa

Category

Primary antibody

Applications

ELISA, WB

Cross-Reactivity

Human, Mouse, Rat

Background

LPL encodes lipoprotein lipase, which is expressed in heart, muscle, and adipose tissue. LPL functions as a homodimer, and has the dual functions of triglyceride hydrolase and ligand/bridging factor for receptor-mediated lipoprotein uptake. Severe mutations that cause LPL deficiency result in type I hyperlipoproteinemia, while less extreme mutations in LPL are linked to many disorders of lipoprotein metabolism.

Recommended Dilutions

WB 1:500 - 1:1000

Immunogen Information

Gene ID

4023

Swiss Prot

P06858

Immunogen

Recombinant fusion protein containing a sequence corresponding to amino acids 124-475 of human Lipoprotein lipase (Lipoprotein lipase (LPL)) (NP_000228.1).

Synonyms

LIPD; HDLCQ11; Lipoprotein lipase (LPL)

Contact

 | 400-999-6126

 | cn.market@abclonal.com.cn

 | www.abclonal.com.cn

Product Information

Source

Rabbit

Isotype

IgG

Purification

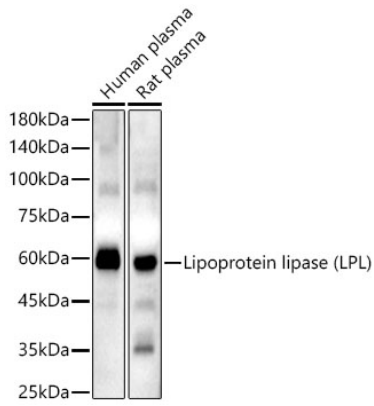
Affinity purification

Storage

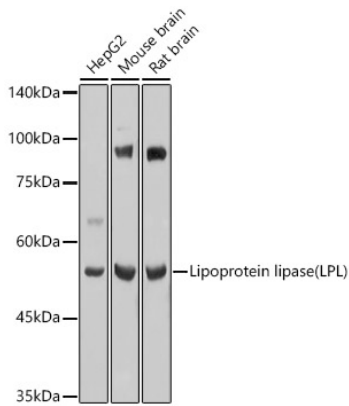
Store at -20°C. Avoid freeze / thaw cycles.

Buffer: PBS with 0.05% proclin300, 50% glycerol, pH7.3.

Validation Data



Western blot analysis of extracts of various cell lines, using Lipoprotein lipase (LPL) antibody (A16252) at 1:5000 dilution.
Secondary antibody: HRP Goat Anti-Rabbit IgG (H+L) (AS014) at 1:10000 dilution.
Lysates/proteins: 25µg per lane.
Blocking buffer: 3% nonfat dry milk in TBST.
Detection: ECL Basic Kit (RM00020).
Exposure time: 180s.



Western blot analysis of extracts of various cell lines, using Lipoprotein lipase (LPL) antibody (A16252) at 1:1000 dilution.
Secondary antibody: HRP Goat Anti-Rabbit IgG (H+L) (AS014) at 1:10000 dilution.
Lysates/proteins: 25µg per lane.
Blocking buffer: 3% nonfat dry milk in TBST.
Detection: ECL Basic Kit (RM00020).
Exposure time: 1s.