

WEE1 Rabbit pAb

Catalog No.: A16256

Basic Information

Observed MW

95kDa

Calculated MW

72kDa

Category

Primary antibody

Applications

ELISA, WB

Cross-Reactivity

Human

Background

This gene encodes a nuclear protein, which is a tyrosine kinase belonging to the Ser/Thr family of protein kinases. This protein catalyzes the inhibitory tyrosine phosphorylation of CDC2/cyclin B kinase, and appears to coordinate the transition between DNA replication and mitosis by protecting the nucleus from cytoplasmically activated CDC2 kinase.

Recommended Dilutions

WB 1:500 - 1:2000

Immunogen Information

Gene ID

7465

Swiss Prot

P30291

Immunogen

A synthetic peptide corresponding to a sequence within amino acids 400-500 of human WEE1 (NP_003381.1).

Synonyms

WEE1A; WEE1hu; WEE1

Contact

 | 400-999-6126

 | cn.market@abclonal.com.cn

 | www.abclonal.com.cn

Product Information

Source

Rabbit

Isotype

IgG

Purification

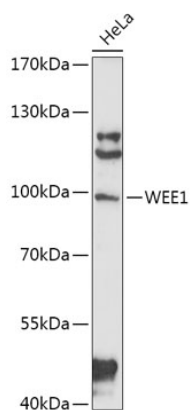
Affinity purification

Storage

Store at -20°C. Avoid freeze / thaw cycles.

Buffer: PBS with 0.01% thimerosal, 50% glycerol, pH7.3.

Validation Data



Western blot analysis of lysates from HeLa cells, using WEE1 Rabbit pAb (A16256) at 1:1000 dilution.
Secondary antibody: HRP Goat Anti-Rabbit IgG (H+L) (AS014) at 1:10000 dilution.
Lysates/proteins: 25µg per lane.
Blocking buffer: 3% nonfat dry milk in TBST.
Detection: ECL Enhanced Kit (RM00021).
Exposure time: 90s.