

# PLGF Rabbit pAb

Catalog No.: A16257

## Basic Information

### Observed MW

50kDa

### Calculated MW

25kDa

### Category

Primary antibody

### Applications

WB,IF/ICC,ELISA

### Cross-Reactivity

Human, Mouse, Rat

## Background

Enables growth factor activity. Involved in positive regulation of cell population proliferation. Predicted to be located in extracellular region. Predicted to be active in extracellular space. Implicated in several diseases, including brain ischemia; diabetic neuropathy; glioblastoma; myocardial infarction; and pancreatic endocrine carcinoma. Biomarker of several diseases, including artery disease (multiple); autoimmune disease of musculoskeletal system (multiple); epilepsy (multiple); limited scleroderma; and pancreatic endocrine carcinoma.

## Recommended Dilutions

**WB** 1:500 - 1:1000

**IF/ICC** 1:50 - 1:200

**ELISA** Recommended starting concentration is 1 µg/mL. Please optimize the concentration based on your specific assay requirements.

## Immunogen Information

### Gene ID

5228

### Swiss Prot

P49763

### Immunogen

Recombinant fusion protein containing a sequence corresponding to amino acids 19-221 of human PLGF (NP\_002623.2).

### Synonyms

PGFL; PIGF; PLGF; PIGF-2; D12S1900; SHGC-10760

## Contact

☎ | 400-999-6126

✉ | [cn.market@abclonal.com.cn](mailto:cn.market@abclonal.com.cn)

🌐 | [www.abclonal.com.cn](http://www.abclonal.com.cn)

## Product Information

### Source

Rabbit

### Isotype

IgG

### Purification

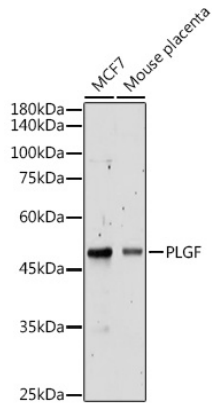
Affinity purification

### Storage

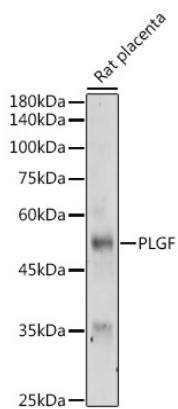
Store at -20°C. Avoid freeze / thaw cycles.

Buffer: PBS with 0.01% thimerosal, 50% glycerol, pH7.3.

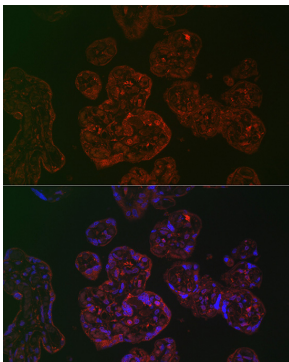
## Validation Data



Western blot analysis of various lysates using PLGF Rabbit pAb (A16257) at 1:500 dilution.  
Secondary antibody: HRP-conjugated Goat anti-Rabbit IgG (H+L) (AS014) at 1:10000 dilution.  
Lysates/proteins: 25µg per lane.  
Blocking buffer: 3% nonfat dry milk in TBST.  
Detection: ECL Basic Kit (RM00020).  
Exposure time: 30s.



Western blot analysis of lysates from Rat placenta, using PLGF Rabbit pAb (A16257) at 1:500 dilution.  
Secondary antibody: HRP-conjugated Goat anti-Rabbit IgG (H+L) (AS014) at 1:10000 dilution.  
Lysates/proteins: 25µg per lane.  
Blocking buffer: 3% nonfat dry milk in TBST.  
Detection: ECL Basic Kit (RM00020).  
Exposure time: 180s.



Immunofluorescence analysis of paraffin-embedded human placenta using PLGF Rabbit pAb (A16257) at dilution of 1:100 (40x lens). Secondary antibody: Cy3-conjugated Goat anti-Rabbit IgG (H+L) (AS007) at 1:500 dilution. Blue: DAPI for nuclear staining.