

# TET2 Rabbit pAb

Catalog No.: A16273 **1 Publications**

## Basic Information

### Observed MW

223kDa

### Calculated MW

224kDa

### Category

Primary antibody

### Applications

WB,IF/ICC,IP

### Cross-Reactivity

Human, Mouse

## Background

The protein encoded by this gene is a methylcytosine dioxygenase that catalyzes the conversion of methylcytosine to 5-hydroxymethylcytosine. The encoded protein is involved in myelopoiesis, and defects in this gene have been associated with several myeloproliferative disorders. Two variants encoding different isoforms have been found for this gene.

## Recommended Dilutions

WB	1:500 - 1:1000
IF/ICC	1:50 - 1:200
IP	1:50 - 1:100

## Immunogen Information

### Gene ID

54790

### Swiss Prot

Q6N021

### Immunogen

A synthetic peptide of human TET2

### Synonyms

MDS; IMD75; KIAA1546; TET2

## Contact

☎	400-999-6126
✉	cn.market@abclonal.com.cn
🌐	www.abclonal.com.cn

## Product Information

### Source

Rabbit

### Isotype

IgG

### Purification

Affinity purification

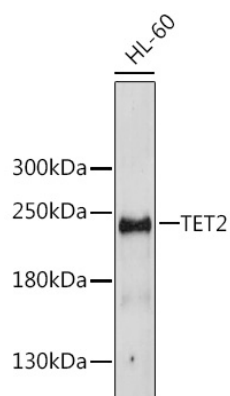
### Storage

Store at -20°C. Avoid freeze / thaw cycles.

Buffer: PBS with 0.02% sodium azide,50% glycerol,pH7.3.

## Validation Data

---



Western blot analysis of extracts of HL-60 cells, using TET2 antibody (A16273).  
Secondary antibody: HRP Goat Anti-Rabbit IgG (H+L) (AS014) at 1:10000 dilution.  
Lysates/proteins: 25µg per lane.  
Blocking buffer: 3% nonfat dry milk in TBST.