

MCU Rabbit pAb

Catalog No.: A16281SP **13 Publications**

Basic Information

Observed MW

35 kDa

Calculated MW

40 kDa/35 kDa/37 kDa

Category

Primary antibody

Applications

WB, ELISA

Cross-Reactivity

Human, Mouse, Rat

Background

Enables calcium channel activity; identical protein binding activity; and uniporter activity. Involved in several processes, including positive regulation of mitochondrial calcium ion concentration; positive regulation of mitochondrial fission; and positive regulation of neutrophil chemotaxis. Acts upstream of or within calcium import into the mitochondrion. Located in mitochondrial inner membrane. Is integral component of mitochondrial inner membrane. Part of uniplex complex.

Recommended Dilutions

WB 1:1000 - 1:5000

ELISA Recommended starting concentration is 1 µg/mL. Please optimize the concentration based on your specific assay requirements. For high-ratio antibody dilutions ($\geq 1:10000$) a sequential dilution method is strongly recommended to ensure measurement accuracy.

Immunogen Information

Gene ID

90550

Swiss Prot

Q8NE86

Immunogen

This information is considered to be commercially sensitive.

Synonyms

HsMCU; C10orf42; CCDC109A; MCU

Contact

 | 400-999-6126

 | cn.market@abclonal.com.cn

 | www.abclonal.com.cn

Product Information

Source

Rabbit

Isotype

IgG

Purification

Affinity purification

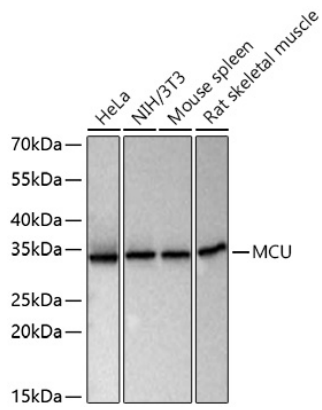
Storage

Store at -20°C. Avoid freeze / thaw cycles.

Buffer: PBS, pH 7.3, containing 50% glycerol. Preserved with Proclin300 or sodium azide.

May contain 0.05% BSA as specified on the Certificate of Analysis.

Validation Data



Western blot analysis of various lysates using MCU Rabbit pAb (A16281SP) at 1:2000 dilution incubated at room temperature for 1.5 hours.

Secondary antibody: HRP-conjugated Goat anti-Rabbit IgG (H+L) (AS014) at 1:10000 dilution.

Lysates/proteins: 25 µg per lane.

Blocking buffer: 3% nonfat dry milk in TBST.

Detection: ECL Basic Kit (RM00020).

Exposure time: 1 s.