

STX6 Rabbit pAb

Catalog No.: A16283

Basic Information

Observed MW

35kDa

Calculated MW

29kDa

Category

Primary antibody

Applications

WB, ELISA

Cross-Reactivity

Human, Mouse

Background

Enables syntaxin binding activity. Involved in several processes, including Golgi ribbon formation; retrograde transport, endosome to Golgi; and vesicle fusion. Acts upstream of or within endocytic recycling. Located in several cellular components, including early endosome; perinuclear region of cytoplasm; and trans-Golgi network. Part of SNARE complex.

Recommended Dilutions

WB 1:500 - 1:1000

ELISA Recommended starting concentration is 1 µg/mL. Please optimize the concentration based on your specific assay requirements.

Immunogen Information

Gene ID

10228

Swiss Prot

O43752

Immunogen

Recombinant protein (or fragment). This information is considered to be commercially sensitive.

Synonyms

STX6

Contact

 | 400-999-6126

 | cn.market@abclonal.com.cn

 | www.abclonal.com.cn

Product Information

Source

Rabbit

Isotype

IgG

Purification

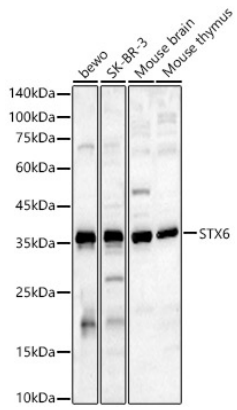
Affinity purification

Storage

Store at -20°C. Avoid freeze / thaw cycles.

Buffer: PBS containing 50% glycerol, preserved with proclin300 or sodium azide (as specified on the Certificate of Analysis), pH 7.3.

Validation Data



Western blot analysis of various lysates, using STX6 Rabbit pAb (A16283) at 1:800 dilution.
Secondary antibody: HRP-conjugated Goat anti-Rabbit IgG (H+L) (AS014) at 1:10000 dilution.
Lysates/proteins: 25 μ g per lane.
Blocking buffer: 3% nonfat dry milk in TBST.
Detection: ECL Basic Kit (RM00020).
Exposure time: 60s.