

# WBP2 Rabbit pAb

Catalog No.: A16312

## Basic Information

### Observed MW

28kDa

### Calculated MW

28kDa

### Category

Primary antibody

### Applications

ELISA, WB

### Cross-Reactivity

Human, Mouse, Rat

## Background

The globular WW domain is composed of 38 to 40 semiconserved amino acids shared by proteins of diverse functions including structural, regulatory, and signaling proteins. The domain is involved in mediating protein-protein interactions through the binding of polyproline ligands. This gene encodes a WW domain binding protein that is a transcriptional coactivator of estrogen receptor alpha and progesterone receptor. Defects in this gene have been associated with hearing impairment.

## Recommended Dilutions

WB 1:500 - 1:2000

## Immunogen Information

### Gene ID

23558

### Swiss Prot

Q969T9

### Immunogen

Recombinant fusion protein containing a sequence corresponding to amino acids 15-140 of human WBP2 (NP\_036610.2).

### Synonyms

WBP-2; GRAMD6; DFNB107; WBP2

## Contact

☎ | 400-999-6126

✉ | [cn.market@abclonal.com.cn](mailto:cn.market@abclonal.com.cn)

🌐 | [www.abclonal.com.cn](http://www.abclonal.com.cn)

## Product Information

### Source

Rabbit

### Isotype

IgG

### Purification

Affinity purification

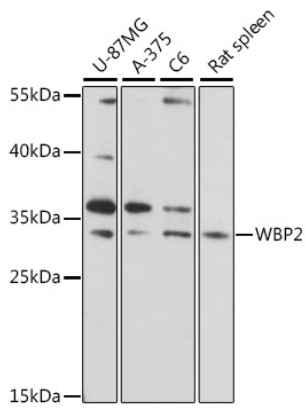
### Storage

Store at -20°C. Avoid freeze / thaw cycles.

Buffer: PBS with 0.01% thimerosal, 50% glycerol, pH7.3.

## Validation Data

---



Western blot analysis of various lysates using WBP2 Rabbit pAb (A16312) at 1:1000 dilution.  
Secondary antibody: HRP Goat Anti-Rabbit IgG (H+L) (AS014) at 1:10000 dilution.  
Lysates/proteins: 25µg per lane.  
Blocking buffer: 3% nonfat dry milk in TBST.  
Detection: ECL Basic Kit (RM00020).  
Exposure time: 120s.