

IL2 Rabbit pAb

Catalog No.: A16317 **4 Publications**

Basic Information

Observed MW

15kDa/16kDa/18kDa

Calculated MW

18kDa

Category

Primary antibody

Applications

WB,IHC-P,ELISA

Cross-Reactivity

Human, Mouse, Rat

Background

This gene is a member of the interleukin 2 (IL2) cytokine subfamily which includes IL4, IL7, IL9, IL15, IL21, erythropoietin, and thrombopoietin. The protein encoded by this gene is a secreted cytokine produced by activated CD4+ and CD8+ T lymphocytes, that is important for the proliferation of T and B lymphocytes. The receptor of this cytokine (IL2R) is a heterotrimeric protein complex whose gamma chain is also shared by IL4 and IL7. The expression of this gene in mature thymocytes is monoallelic, which represents an unusual regulatory mode for controlling the precise expression of a single gene. The targeted disruption of a similar gene in mice leads to ulcerative colitis-like disease, which suggests an essential role of this gene in the immune response to antigenic stimuli.

Recommended Dilutions

WB 1:500 - 1:1000

IHC-P 1:50 - 1:200

ELISA Recommended starting concentration is 1 µg/mL. Please optimize the concentration based on your specific assay requirements.

Immunogen Information

Gene ID

3558

Swiss Prot

P60568

Immunogen

Recombinant fusion protein containing a sequence corresponding to amino acids 21-153 of IL2 (NP_000577.2).

Synonyms

IL-2; TCGF; lymphokine; IL2

Contact

☎ | 400-999-6126

✉ | cn.market@abclonal.com.cn

🌐 | www.abclonal.com.cn

Product Information

Source

Rabbit

Isotype

IgG

Purification

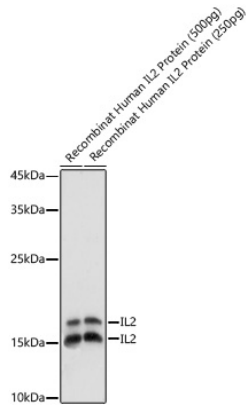
Affinity purification

Storage

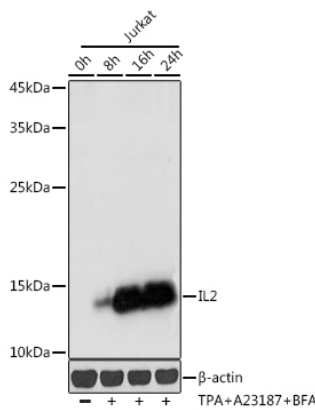
Store at -20°C. Avoid freeze / thaw cycles.

Buffer: PBS with 0.05% proclin300,50% glycerol,pH7.3.

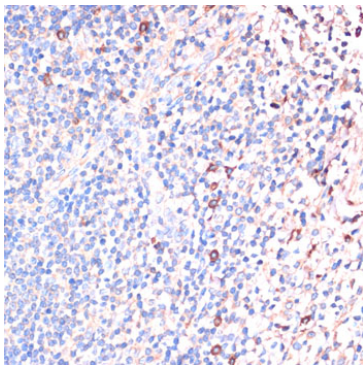
Validation Data



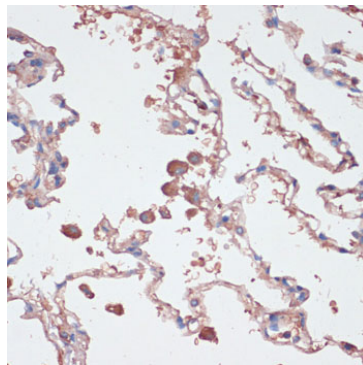
Western blot analysis of lysates from Recombinant Human IL2 Protein, using IL2 Rabbit pAb (A16317) at 1:1000 dilution.
 Secondary antibody: HRP-conjugated Goat anti-Rabbit IgG (H+L) (AS014) at 1:10000 dilution.
 Lysates/proteins: 25µg per lane.
 Blocking buffer: 3% nonfat dry milk in TBST.
 Detection: ECL Basic Kit (RM00020).
 Exposure time: 1s.



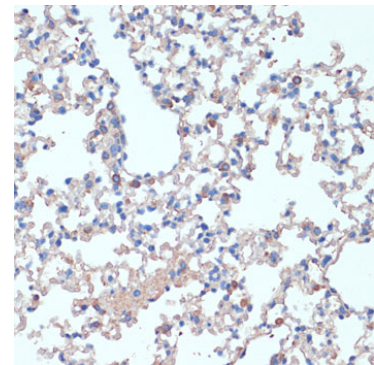
Western blot analysis of lysates from Jurkat cells, using IL2 Rabbit pAb (A16898) at 1:1000 dilution. Jurkat cells were treated by TPA (40 nM), A23187 (2µM) and Brefeldin A (300 ng / ml) for 0-24hours
 Secondary antibody: HRP-conjugated Goat anti-Rabbit IgG (H+L) (AS014) at 1:10000 dilution.
 Lysates/proteins: 25µg per lane.
 Blocking buffer: 3% nonfat dry milk in TBST.
 Detection: ECL Basic Kit (RM00020).
 Exposure time: 1s.



Immunohistochemistry analysis of paraffin-embedded Human tonsil using IL2 Rabbit pAb (A16317) at dilution of 1:100 (40x lens).
 Microwave antigen retrieval performed with 0.01M PBS Buffer (pH 7.2) prior to IHC staining.

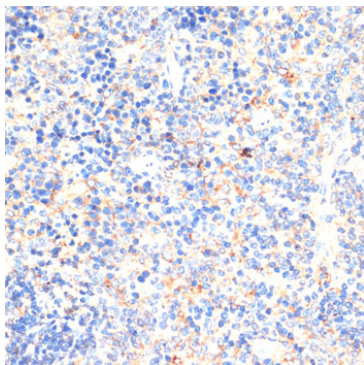


Immunohistochemistry analysis of paraffin-embedded Human lung using IL2 Rabbit pAb (A16317) at dilution of 1:100 (40x lens).
 Microwave antigen retrieval performed with 0.01M PBS Buffer (pH 7.2) prior to IHC staining.



Immunohistochemistry analysis of paraffin-embedded Mouse lung using IL2 Rabbit pAb (A16317) at dilution of 1:100 (40x lens).
 Microwave antigen retrieval performed with 0.01M PBS Buffer (pH 7.2) prior to IHC staining.

Validation Data



Immunohistochemistry analysis of paraffin-embedded Mouse spleen using IL2 Rabbit pAb (A16317) at dilution of 1:100 (40x lens). Microwave antigen retrieval performed with 0.01M PBS Buffer (pH 7.2) prior to IHC staining.