

Alpha-2-Macroglobulin (A2M) Rabbit pAb

Catalog No.: A16336

Basic Information

Observed MW

Refer to figures

Calculated MW

163kDa

Category

Primary antibody

Applications

ELISA, WB, IHC-P

Cross-Reactivity

Human

Background

The protein encoded by this gene is a protease inhibitor and cytokine transporter. It uses a bait-and-trap mechanism to inhibit a broad spectrum of proteases, including trypsin, thrombin and collagenase. It can also inhibit inflammatory cytokines, and it thus disrupts inflammatory cascades. Mutations in this gene are a cause of alpha-2-macroglobulin deficiency. This gene is implicated in Alzheimer's disease (AD) due to its ability to mediate the clearance and degradation of A-beta, the major component of beta-amyloid deposits. A related pseudogene, which is also located on the p arm of chromosome 12, has been identified.

Recommended Dilutions

WB	1:500 - 1:2000
IHC-P	1:50 - 1:200

Immunogen Information

Gene ID	Swiss Prot
2	P01023

Immunogen

Recombinant fusion protein containing a sequence corresponding to amino acids 1155-1474 of human Alpha-2-Macroglobulin (Alpha-2-Macroglobulin (A2M)) (NP_000005.2).

Synonyms

A2MD; CPAMD5; FWP007; S863-7; Alpha-2-Macroglobulin (A2M)

Contact

	400-999-6126
	cn.market@abclonal.com.cn
	www.abclonal.com.cn

Product Information

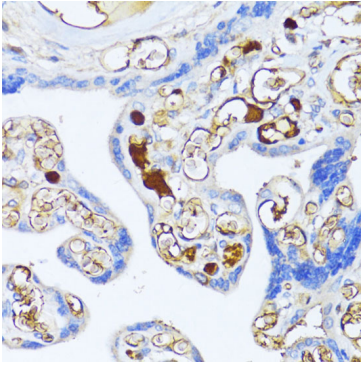
Source	Isotype	Purification
Rabbit	IgG	Affinity purification

Storage

Store at -20°C. Avoid freeze / thaw cycles.

Buffer: PBS with 0.01% thimerosal, 50% glycerol, pH7.3.

Validation Data



Immunohistochemistry analysis of paraffin-embedded human placenta using Alpha-2-Macroglobulin (A2M) Rabbit pAb (A16336) at dilution of 1:100 (40x lens). Perform microwave antigen retrieval with 10 mM PBS buffer pH 7.2 before commencing with IHC staining protocol.