

# ARAF Rabbit pAb

Catalog No.: A16346 **1 Publications**

## Basic Information

### Observed MW

Refer to figures

### Calculated MW

68kDa

### Category

Primary antibody

### Applications

ELISA, WB, IF/ICC

### Cross-Reactivity

Human, Mouse, Rat

## Background

Enables protein serine/threonine kinase activity. Involved in negative regulation of apoptotic process; regulation of TOR signaling; and regulation of cellular protein metabolic process. Predicted to be active in cytosol and mitochondrion. Biomarker of high grade glioma.

## Recommended Dilutions

<b>WB</b>	1:500 - 1:2000
<b>IF/ICC</b>	1:50 - 1:200

## Immunogen Information

### Gene ID

369

### Swiss Prot

P10398

### Immunogen

Recombinant fusion protein containing a sequence corresponding to amino acids 371-606 of human ARAF (NP\_001645.1).

### Synonyms

PKS2; A-RAF; ARAF1; RAFA1; ARAF

## Contact

 | 400-999-6126

 | [cn.market@abclonal.com.cn](mailto:cn.market@abclonal.com.cn)

 | [www.abclonal.com.cn](http://www.abclonal.com.cn)

## Product Information

### Source

Rabbit

### Isotype

IgG

### Purification

Affinity purification

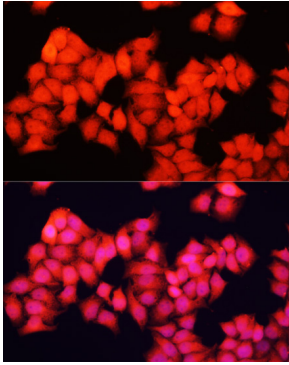
### Storage

Store at -20°C. Avoid freeze / thaw cycles.

Buffer: PBS with 0.02% sodium azide, 50% glycerol, pH 7.3.

## Validation Data

---



Immunofluorescence analysis of HeLa cells using ARAF antibody (A16346) at dilution of 1:100. Blue: DAPI for nuclear staining.