

# ARL3 Rabbit pAb

Catalog No.: A16348

## Basic Information

### Observed MW

20kDa

### Calculated MW

20kDa

### Category

Primary antibody

### Applications

ELISA,WB,IF/ICC

### Cross-Reactivity

Human, Mouse, Rat

## Background

Enables GDP binding activity; GTP binding activity; and microtubule binding activity. Involved in several processes, including cilium assembly; protein localization to cilium; and small GTPase mediated signal transduction. Acts upstream of or within post-Golgi vesicle-mediated transport. Located in several cellular components, including microtubule cytoskeleton; midbody; and photoreceptor connecting cilium. Implicated in Joubert syndrome and retinitis pigmentosa 83.

## Recommended Dilutions

WB 1:500 - 1:2000

IF/ICC 1:50 - 1:100

## Immunogen Information

### Gene ID

403

### Swiss Prot

P36405

### Immunogen

Recombinant fusion protein containing a sequence corresponding to amino acids 1-182 of human ARL3 (NP\_004302.1).

### Synonyms

RP83; ARFL3; JBTS35; ARL3

## Contact

☎ | 400-999-6126

✉ | [cn.market@abclonal.com.cn](mailto:cn.market@abclonal.com.cn)

🌐 | [www.abclonal.com.cn](http://www.abclonal.com.cn)

## Product Information

### Source

Rabbit

### Isotype

IgG

### Purification

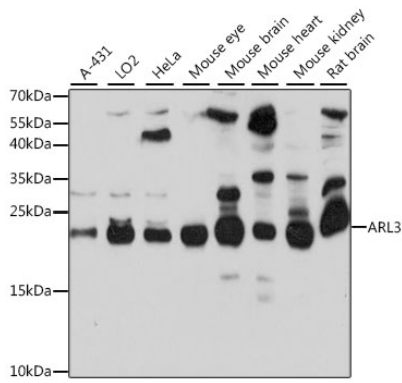
Affinity purification

### Storage

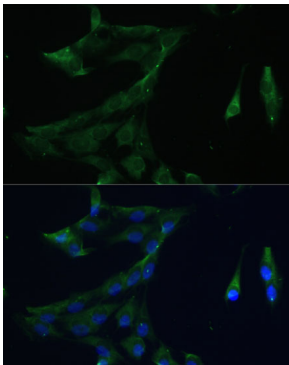
Store at -20°C. Avoid freeze / thaw cycles.

Buffer: PBS with 0.01% thimerosal, 50% glycerol, pH7.3.

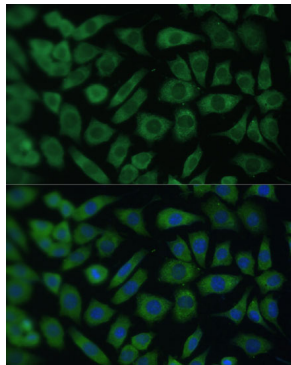
## Validation Data



Western blot analysis of various lysates using ARL3 Rabbit pAb (A16348) at 1:1000 dilution. Secondary antibody: HRP Goat Anti-Rabbit IgG (H+L) (AS014) at 1:10000 dilution. Lysates/proteins: 25µg per lane. Blocking buffer: 3% nonfat dry milk in TBST. Detection: ECL Basic Kit (RM00020). Exposure time: 30s.



Immunofluorescence analysis of C6 cells using ARL3 Rabbit pAb (A16348) at dilution of 1:100 (40x lens). Secondary antibody: Cy3 Goat Anti-Rabbit IgG (H+L) (AS007) at 1:500 dilution. Blue: DAPI for nuclear staining.



Immunofluorescence analysis of L929 cells using ARL3 Rabbit pAb (A16348) at dilution of 1:100 (40x lens). Secondary antibody: Cy3 Goat Anti-Rabbit IgG (H+L) (AS007) at 1:500 dilution. Blue: DAPI for nuclear staining.