

GRINA Rabbit pAb

Catalog No.: A16380

Basic Information

Observed MW

53kDa

Calculated MW

41kDa

Category

Primary antibody

Applications

ELISA, WB

Cross-Reactivity

Human, Mouse, Rat

Background

Predicted to enable transmembrane transporter binding activity. Predicted to act upstream of or within endoplasmic reticulum calcium ion homeostasis and negative regulation of endoplasmic reticulum stress-induced intrinsic apoptotic signaling pathway. Predicted to be located in Golgi apparatus and endoplasmic reticulum. Predicted to be integral component of membrane.

Recommended Dilutions

WB 1:500 - 1:2000

Immunogen Information

Gene ID

2907

Swiss Prot

Q7Z429

Immunogen

A synthetic peptide corresponding to a sequence within amino acids 1-100 of human GRINA (NP_000828.1).

Synonyms

LFG1; HNRGW; TMBIM3; NMDARA1; GRINA

Contact

☎ | 400-999-6126

✉ | cn.market@abclonal.com.cn

🌐 | www.abclonal.com.cn

Product Information

Source

Rabbit

Isotype

IgG

Purification

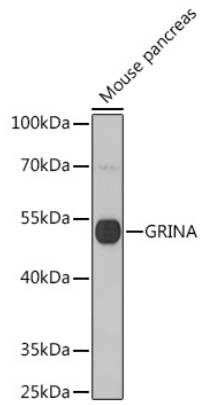
Affinity purification

Storage

Store at -20°C. Avoid freeze / thaw cycles.

Buffer: PBS with 0.01% thimerosal, 50% glycerol, pH 7.3.

Validation Data



Western blot analysis of lysates from Mouse pancreas, using GRINA Rabbit pAb (A16380) at 1:1000 dilution.

Secondary antibody: HRP Goat Anti-Rabbit IgG (H+L) (AS014) at 1:10000 dilution.

Lysates/proteins: 25µg per lane.

Blocking buffer: 3% nonfat dry milk in TBST.

Detection: ECL Basic Kit (RM00020).

Exposure time: 1s.