

# IFI35 Rabbit pAb

Catalog No.: A16384 **1 Publications**

## Basic Information

### Observed MW

35kDa

### Calculated MW

32kDa

### Category

Primary antibody

### Applications

ELISA, WB

### Cross-Reactivity

Human, Mouse

## Background

Enables identical protein binding activity. Involved in several processes, including macrophage activation involved in immune response; positive regulation of defense response; and regulation of signal transduction. Located in several cellular components, including cytosol; extracellular space; and nucleus.

## Recommended Dilutions

WB 1:500 - 1:2000

## Immunogen Information

### Gene ID

3430

### Swiss Prot

P80217

### Immunogen

Recombinant fusion protein containing a sequence corresponding to amino acids 1-288 of human IFI35 (NP\_005524.2).

### Synonyms

IFP35; IFI35

## Contact

 | 400-999-6126

 | [cn.market@abclonal.com.cn](mailto:cn.market@abclonal.com.cn)

 | [www.abclonal.com.cn](http://www.abclonal.com.cn)

## Product Information

### Source

Rabbit

### Isotype

IgG

### Purification

Affinity purification

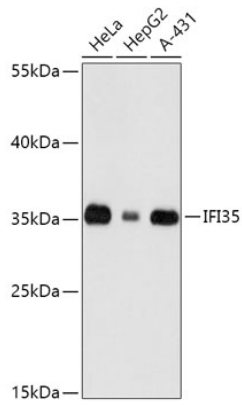
### Storage

Store at -20°C. Avoid freeze / thaw cycles.

Buffer: PBS with 0.01% thimerosal, 50% glycerol, pH7.3.

## Validation Data

---



Western blot analysis of various lysates using IFI35 Rabbit pAb (A16384) at 1:1000 dilution.  
Secondary antibody: HRP Goat Anti-Rabbit IgG (H+L) (AS014) at 1:10000 dilution.  
Lysates/proteins: 25µg per lane.  
Blocking buffer: 3% nonfat dry milk in TBST.  
Detection: ECL Basic Kit (RM00020).  
Exposure time: 30s.