

# Cytokeratin 13 (KRT13) Rabbit pAb

**Catalog No.: A16393**

## Basic Information

**Observed MW**

50kDa

**Calculated MW**

50kDa

**Category**

Primary antibody

**Applications**

ELISA, WB, IHC-P, IF/ICC

**Cross-Reactivity**

Human

## Background

The protein encoded by this gene is a member of the keratin gene family. The keratins are intermediate filament proteins responsible for the structural integrity of epithelial cells and are subdivided into cytokeratins and hair keratins. Most of the type I cytokeratins consist of acidic proteins which are arranged in pairs of heterotypic keratin chains. This type I cytokeratin is paired with keratin 4 and expressed in the suprabasal layers of non-cornified stratified epithelia. Mutations in this gene and keratin 4 have been associated with the autosomal dominant disorder White Sponge Nevus. The type I cytokeratins are clustered in a region of chromosome 17q21.2. Alternative splicing of this gene results in multiple transcript variants; however, not all variants have been described.

## Recommended Dilutions

<b>WB</b>	1:500 - 1:2000
<b>IHC-P</b>	1:50 - 1:100
<b>IF/ICC</b>	1:50 - 1:100

## Immunogen Information

**Gene ID**

3860

**Swiss Prot**

P13646

**Immunogen**

Recombinant fusion protein containing a sequence corresponding to amino acids 269-458 of human Cytokeratin 13 (Cytokeratin 13 (KRT13)) (NP\_705694.2).

**Synonyms**

K13; CK13; WSN2; Cytokeratin 13 (KRT13)

## Contact

 | 400-999-6126 | [cn.market@abclonal.com.cn](mailto:cn.market@abclonal.com.cn) | [www.abclonal.com.cn](http://www.abclonal.com.cn)

## Product Information

**Source**

Rabbit

**Isotype**

IgG

**Purification**

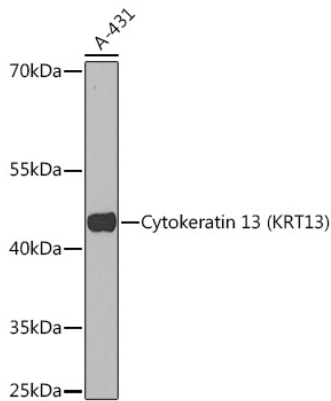
Affinity purification

**Storage**

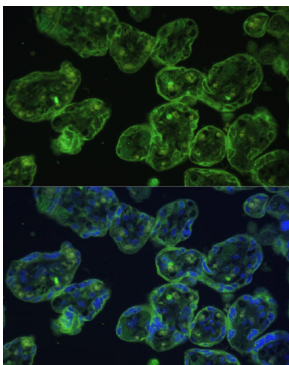
Store at -20°C. Avoid freeze / thaw cycles.

Buffer: PBS with 0.02% sodium azide, 50% glycerol, pH7.3.

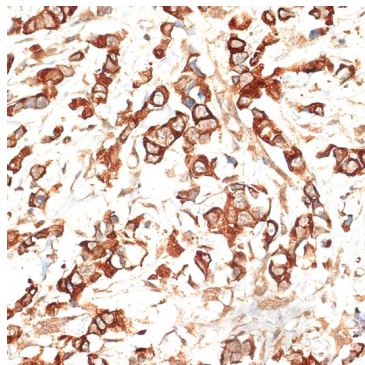
## Validation Data



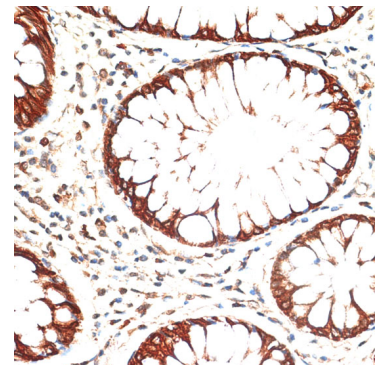
Western blot analysis of lysates from A-431 cells, using Cytokeratin 13 (Cytokeratin 13 (KRT13)) Rabbit pAb (A16393) at 1:1000 dilution.  
Secondary antibody: HRP Goat Anti-Rabbit IgG (H+L) (AS014) at 1:10000 dilution.  
Lysates/proteins: 25µg per lane.  
Blocking buffer: 3% nonfat dry milk in TBST.  
Detection: ECL Basic Kit (RM00020).  
Exposure time: 90s.



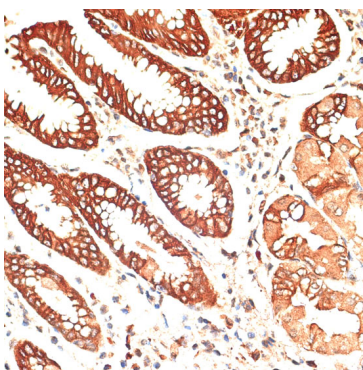
Immunofluorescence analysis of paraffin-embedded human placenta using Cytokeratin 13 (KRT13) Rabbit pAb (A16393) at dilution of 1:100 (40x lens). Secondary antibody: Cy3 Goat Anti-Rabbit IgG (H+L) (AS007) at 1:500 dilution. Blue: DAPI for nuclear staining.



Immunohistochemistry analysis of paraffin-embedded human breast cancer using Cytokeratin 13 (KRT13) Rabbit pAb (A16393) at dilution of 1:100 (40x lens). Perform microwave antigen retrieval with 10 mM PBS buffer pH 7.2 before commencing with IHC staining protocol.



Immunohistochemistry analysis of paraffin-embedded human colon carcinoma using Cytokeratin 13 (KRT13) Rabbit pAb (A16393) at dilution of 1:100 (40x lens). Perform microwave antigen retrieval with 10 mM PBS buffer pH 7.2 before commencing with IHC staining protocol.



Immunohistochemistry analysis of paraffin-embedded human stomach using Cytokeratin 13 (KRT13) Rabbit pAb (A16393) at dilution of 1:100 (40x lens). Perform microwave antigen retrieval with 10 mM PBS buffer pH 7.2 before commencing with IHC staining protocol.