

OCM2 Rabbit pAb

Catalog No.: A16410

Basic Information

Observed MW

12kDa

Calculated MW

12kDa

Category

Primary antibody

Applications

ELISA, WB

Cross-Reactivity

Rat

Background

This gene is similar to the oncomodulin gene, a high-affinity calcium ion-binding protein that belongs to the superfamily of calmodulin proteins, also known as the EF-hand proteins.

Recommended Dilutions

WB 1:500 - 1:2000

Immunogen Information

Gene ID

4951

Swiss Prot

P0CE71

Immunogen

Recombinant fusion protein containing a sequence corresponding to amino acids 1-109 of human OCM2 (NP_006179.2).

Synonyms

OM; OCM; OCM2

Contact

☎ | 400-999-6126

✉ | cn.market@abclonal.com.cn

🌐 | www.abclonal.com.cn

Product Information

Source

Rabbit

Isotype

IgG

Purification

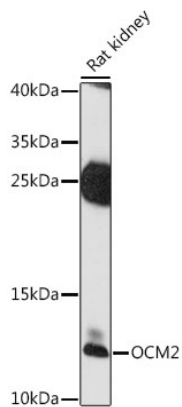
Affinity purification

Storage

Store at -20°C. Avoid freeze / thaw cycles.

Buffer: PBS with 0.01% thimerosal, 50% glycerol, pH7.3.

Validation Data



Western blot analysis of lysates from rat kidney, using OCM2 Rabbit pAb (A16410) at 1:1000 dilution.
Secondary antibody: HRP Goat Anti-Rabbit IgG (H+L) (AS014) at 1:10000 dilution.
Lysates/proteins: 25µg per lane.
Blocking buffer: 3% nonfat dry milk in TBST.
Detection: ECL Enhanced Kit (RM00021).
Exposure time: 90s.