

SLIT1 Rabbit pAb

Catalog No.: A16430

Basic Information

Observed MW

168kDa

Calculated MW

168kDa

Category

Primary antibody

Applications

ELISA, WB

Cross-Reactivity

Human

Background

Enables Roundabout binding activity. Involved in axon extension involved in axon guidance; motor neuron axon guidance; and negative chemotaxis. Predicted to be located in extracellular region. Predicted to be active in extracellular space.

Recommended Dilutions

WB 1:500 - 1:2000

Immunogen Information

Gene ID

6585

Swiss Prot

O75093

Immunogen

Recombinant fusion protein containing a sequence corresponding to amino acids 1315-1534 of human SLIT1 (NP_003052.2).

Synonyms

MEGF4; SLIL1; SLIT3; SLIT-1; SLIT1

Contact

☎ | 400-999-6126

✉ | cn.market@abclonal.com.cn

🌐 | www.abclonal.com.cn

Product Information

Source

Rabbit

Isotype

IgG

Purification

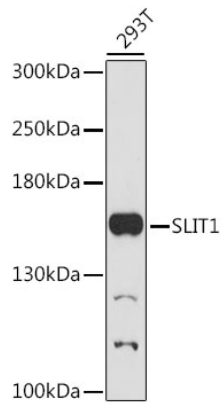
Affinity purification

Storage

Store at -20°C. Avoid freeze / thaw cycles.

Buffer: PBS with 0.01% thimerosal, 50% glycerol, pH7.3.

Validation Data



Western blot analysis of lysates from 293T cells, using SLIT1 Rabbit pAb (A16430) at 1:1000 dilution.
Secondary antibody: HRP Goat Anti-Rabbit IgG (H+L) (AS014) at 1:10000 dilution.
Lysates/proteins: 25µg per lane.
Blocking buffer: 3% nonfat dry milk in TBST.
Detection: ECL Basic Kit (RM00020).
Exposure time: 3min.