

# SP4 Rabbit pAb

Catalog No.: A16431

## Basic Information

### Observed MW

82kDa

### Calculated MW

82kDa

### Category

Primary antibody

### Applications

WB,ELISA

### Cross-Reactivity

Human, Mouse, Rat

## Background

The protein encoded by this gene is a transcription factor that can bind to the GC promoter region of a variety of genes, including those of the photoreceptor signal transduction system. The encoded protein binds to the same sites in promoter CpG islands as does the transcription factor SP1, although its expression is much more restricted compared to that of SP1. This gene may be involved in bipolar disorder and schizophrenia.

## Recommended Dilutions

**WB** 1:500 - 1:2000

**ELISA** Recommended starting concentration is 1 µg/mL. Please optimize the concentration based on your specific assay requirements.

## Immunogen Information

### Gene ID

6671

### Swiss Prot

Q02446

### Immunogen

Recombinant protein (or fragment). This information is considered to be commercially sensitive.

### Synonyms

HF1B; SPR-1; SP4

## Contact

☎ | 400-999-6126

✉ | [cn.market@abclonal.com.cn](mailto:cn.market@abclonal.com.cn)

🌐 | [www.abclonal.com.cn](http://www.abclonal.com.cn)

## Product Information

### Source

Rabbit

### Isotype

IgG

### Purification

Affinity purification

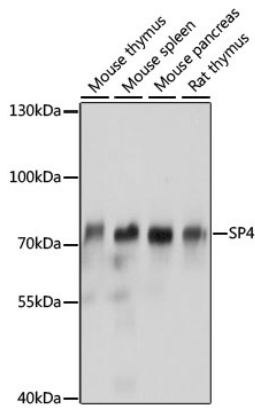
### Storage

Store at -20°C. Avoid freeze / thaw cycles.

Buffer: PBS with 0.01% thimerosal, 50% glycerol, pH7.3.

## Validation Data

---



Western blot analysis of various lysates using SP4 Rabbit pAb (A16431) at 1:1000 dilution.  
Secondary antibody: HRP-conjugated Goat anti-Rabbit IgG (H+L) (AS014) at 1:10000 dilution.  
Lysates/proteins: 25 $\mu$ g per lane.  
Blocking buffer: 3% nonfat dry milk in TBST.  
Detection: ECL Basic Kit (RM00020).  
Exposure time: 1s.