

# CD11a/LFA-1A/ITGAL Rabbit pAb

Catalog No.: A1644 **1 Publications**

## Basic Information

### Observed MW

180kDa

### Calculated MW

129kDa

### Category

Primary antibody

### Applications

ELISA, WB, IHC-P, IF/ICC

### Cross-Reactivity

Human, Mouse, Rat

## Background

ITGAL encodes the integrin alpha L chain. Integrins are heterodimeric integral membrane proteins composed of an alpha chain and a beta chain. This I-domain containing alpha integrin combines with the beta 2 chain (ITGB2) to form the integrin lymphocyte function-associated antigen-1 (LFA-1), which is expressed on all leukocytes. LFA-1 plays a central role in leukocyte intercellular adhesion through interactions with its ligands, ICAMs 1-3 (intercellular adhesion molecules 1 through 3), and also functions in lymphocyte costimulatory signaling. Two transcript variants encoding different isoforms have been found for this gene.

## Recommended Dilutions

WB	1:100 - 1:500
IHC-P	1:50 - 1:100
IF/ICC	1:50 - 1:100

## Immunogen Information

### Gene ID

3683

### Swiss Prot

P20701

### Immunogen

Recombinant fusion protein containing a sequence corresponding to amino acids 26-340 of human CD11a/LFA-1A/ITGAL (NP\_001107852.1).

### Synonyms

CD11A; LFA-1; LFA1A; CD11a/LFA-1A/ITGAL

## Contact

☎ | 400-999-6126

✉ | [cn.market@abclonal.com.cn](mailto:cn.market@abclonal.com.cn)

🌐 | [www.abclonal.com.cn](http://www.abclonal.com.cn)

## Product Information

### Source

Rabbit

### Isotype

IgG

### Purification

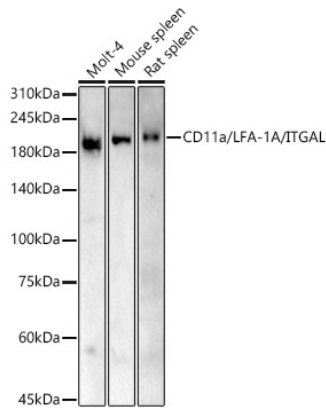
Affinity purification

### Storage

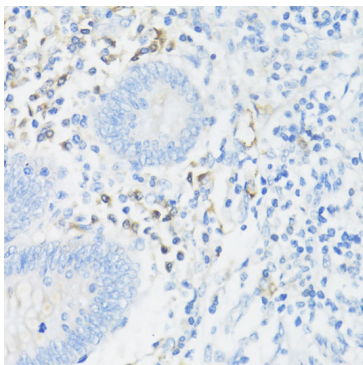
Store at -20°C. Avoid freeze / thaw cycles.

Buffer: PBS with 0.05% proclin300, 50% glycerol, pH7.3.

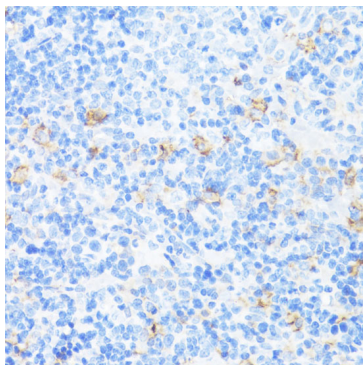
## Validation Data



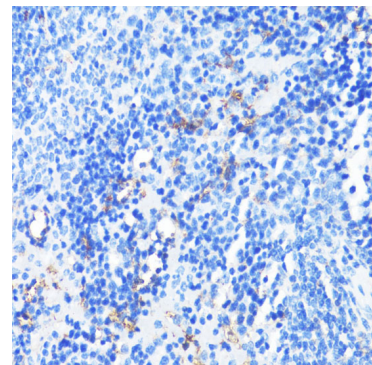
Western blot analysis of various lysates, using CD11a/LFA-1A/ITGAL Rabbit pAb (A1644) at 1:500 dilution. Secondary antibody: HRP Goat Anti-Rabbit IgG (H+L) (AS014) at 1:10000 dilution. Lysates/proteins: 25µg per lane. Blocking buffer: 3% nonfat dry milk in TBST. Detection: ECL Basic Kit (RM00020). Exposure time: 180s.



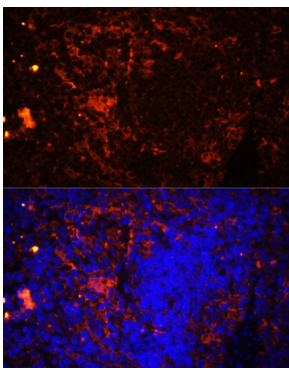
Immunohistochemistry analysis of paraffin-embedded human appendix using CD11a/LFA-1A/ITGAL Rabbit pAb (A1644) at dilution of 1:100 (40x lens). Perform microwave antigen retrieval with 10 mM PBS buffer pH 7.2 before commencing with IHC staining protocol.



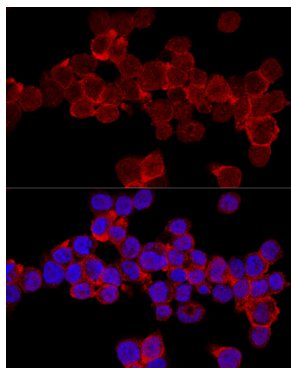
Immunohistochemistry analysis of paraffin-embedded rat spleen using CD11a/LFA-1A/ITGAL Rabbit pAb (A1644) at dilution of 1:100 (40x lens). Perform microwave antigen retrieval with 10 mM PBS buffer pH 7.2 before commencing with IHC staining protocol.



Immunohistochemistry analysis of paraffin-embedded mouse spleen using CD11a/LFA-1A/ITGAL Rabbit pAb (A1644) at dilution of 1:100 (40x lens). Perform microwave antigen retrieval with 10 mM PBS buffer pH 7.2 before commencing with IHC staining protocol.



Immunofluorescence analysis of paraffin-embedded rat spleen using CD11a/LFA-1A/ITGAL Rabbit pAb (A1644) at dilution of 1:100 (40x lens). Secondary antibody: Cy3 Goat Anti-Rabbit IgG (H+L) (AS007) at 1:500 dilution. Blue: DAPI for nuclear staining.



Confocal immunofluorescence analysis of THP-1 cells using CD11a/LFA-1A/ITGAL Rabbit pAb (A1644) at dilution of 1:200. Blue: DAPI for nuclear staining.