

ZFX Rabbit pAb

Catalog No.: A16444 **1 Publications**

Basic Information

Observed MW

110kDa

Calculated MW

91kDa

Category

Primary antibody

Applications

ELISA, WB

Cross-Reactivity

Human, Mouse, Rat

Background

This gene on the X chromosome is structurally similar to a related gene on the Y chromosome. It encodes a member of the krueppel C2H2-type zinc-finger protein family. The full-length protein contains an acidic transcriptional activation domain (AD), a nuclear localization sequence (NLS) and a DNA binding domain (DBD) consisting of 13 C2H2-type zinc fingers. Studies in mouse embryonic and adult hematopoietic stem cells showed that this gene was required as a transcriptional regulator for self-renewal of both stem cell types, but it was dispensable for growth and differentiation of their progeny. Multiple alternatively spliced transcript variants encoding different isoforms have been identified, but the full-length nature of some variants has not been determined.

Recommended Dilutions

WB 1:500 - 1:2000

Immunogen Information

Gene ID

7543

Swiss Prot

P17010

Immunogen

Recombinant fusion protein containing a sequence corresponding to amino acids 180-380 of human ZFX (NP_003401.2).

Synonyms

ZNF926; ZFX

Contact

☎ | 400-999-6126

✉ | cn.market@abclonal.com.cn

🌐 | www.abclonal.com.cn

Product Information

Source

Rabbit

Isotype

IgG

Purification

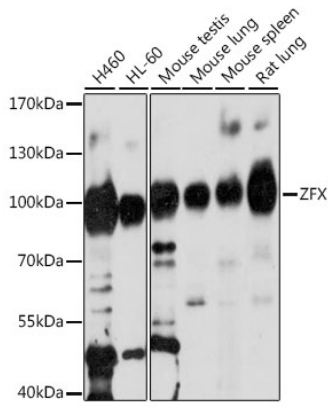
Affinity purification

Storage

Store at -20°C. Avoid freeze / thaw cycles.

Buffer: PBS with 0.01% thimerosal, 50% glycerol, pH7.3.

Validation Data



Western blot analysis of various lysates using ZFX Rabbit pAb (A16444) at 1:1000 dilution.
Secondary antibody: HRP Goat Anti-Rabbit IgG (H+L) (AS014) at 1:10000 dilution.
Lysates/proteins: 25µg per lane.
Blocking buffer: 3% nonfat dry milk in TBST.
Detection: ECL Enhanced Kit (RM00021).
Exposure time: 90s.