

ELL Rabbit pAb

Catalog No.: A16448

Basic Information

Observed MW

72kDa

Calculated MW

68kDa

Category

Primary antibody

Applications

ELISA, WB

Cross-Reactivity

Mouse

Background

Enables phosphatase binding activity. Involved in positive regulation of transcription, DNA-templated and snRNA transcription. Located in cytosol; nuclear body; and transcriptionally active chromatin. Part of transcription elongation factor complex.

Recommended Dilutions

WB 1:500 - 1:2000

Immunogen Information

Gene ID

8178

Swiss Prot

P55199

Immunogen

A synthetic peptide corresponding to a sequence within amino acids 350-450 of human ELL (NP_006523.1).

Synonyms

MEN; ELL1; PPP1R68; C19orf17; ELL

Contact

 | 400-999-6126

 | cn.market@abclonal.com.cn

 | www.abclonal.com.cn

Product Information

Source

Rabbit

Isotype

IgG

Purification

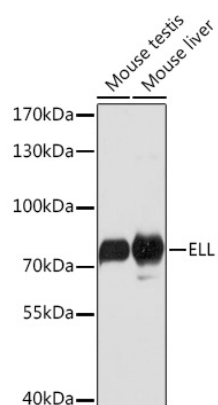
Affinity purification

Storage

Store at -20°C. Avoid freeze / thaw cycles.

Buffer: PBS with 0.01% thimerosal, 50% glycerol, pH7.3.

Validation Data



Western blot analysis of various lysates using ELL Rabbit pAb (A16448) at 1:1000 dilution.
Secondary antibody: HRP Goat Anti-Rabbit IgG (H+L) (AS014) at 1:10000 dilution.
Lysates/proteins: 25µg per lane.
Blocking buffer: 3% nonfat dry milk in TBST.
Detection: ECL Basic Kit (RM00020).
Exposure time: 3s.