

PD-L1/CD274 Rabbit pAb

Catalog No.: A1645SP **49 Publications**

Basic Information

Observed MW

40-50 kDa

Calculated MW

33 kDa/20 kDa

Category

Primary antibody

Applications

WB,IF/ICC,IHC-P,ELISA

Cross-Reactivity

Human, Mouse

Background

This gene encodes an immune inhibitory receptor ligand that is expressed by hematopoietic and non-hematopoietic cells, such as T cells and B cells and various types of tumor cells. The encoded protein is a type I transmembrane protein that has immunoglobulin V-like and C-like domains. Interaction of this ligand with its receptor inhibits T-cell activation and cytokine production. During infection or inflammation of normal tissue, this interaction is important for preventing autoimmunity by maintaining homeostasis of the immune response. In tumor microenvironments, this interaction provides an immune escape for tumor cells through cytotoxic T-cell inactivation. Expression of this gene in tumor cells is considered to be prognostic in many types of human malignancies, including colon cancer and renal cell carcinoma. Alternative splicing results in multiple transcript variants.

Recommended Dilutions

WB 1:1000 - 1:3000

IF/ICC 1:200 - 1:400

IHC-P 1:500 - 1:2000

ELISA Recommended starting concentration is 1 µg/mL. Please optimize the concentration based on your specific assay requirements. For high-ratio antibody dilutions (≥1:10000) a sequential dilution method is strongly recommended to ensure measurement accuracy.

Immunogen Information

Gene ID

29126/60533

Swiss Prot

Q9NZQ7/Q9EP73

Immunogen

This information is considered to be commercially sensitive.

Synonyms

B7-H; B7H1; PDL1; PD-L1; hPD-L1; PDCD1L1; PDCD1LG1; PD-L1/CD274; B7h1; Pdl1; Pcdcd1l1; Pcdcd1lg1; A530045L16Rik; 74

Product Information

Source

Rabbit

Isotype

IgG

Purification

Affinity purification

Storage

Store at -20°C. Avoid freeze / thaw cycles.

Buffer: PBS, pH 7.3, containing 50% glycerol. Preserved with Proclin300 or sodium azide.

May contain 0.05% BSA as specified on the Certificate of Analysis.

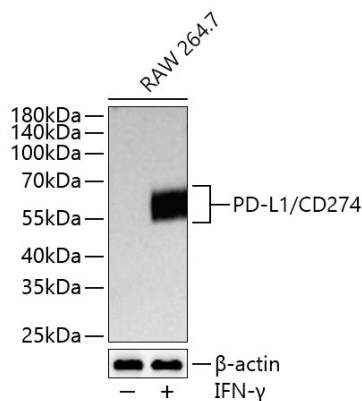
Contact

 | 400-999-6126

 | cn.market@abclonal.com.cn

 | www.abclonal.com.cn

Validation Data



Western blot analysis of lysates from RAW 264.7 cells using PD-L1/CD274 Rabbit pAb (A1645SP) at 1:1000 dilution incubated at room temperature for 1.5 hours. RAW 264.7 cells were treated with IFN- γ (100 nM) at 37°C for 24 hours

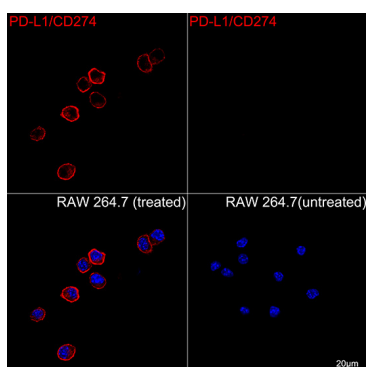
Secondary antibody: HRP-conjugated Goat anti-Rabbit IgG (H+L) (AS014) at 1:10000 dilution.

Lysates/proteins: 30 μ g per lane.

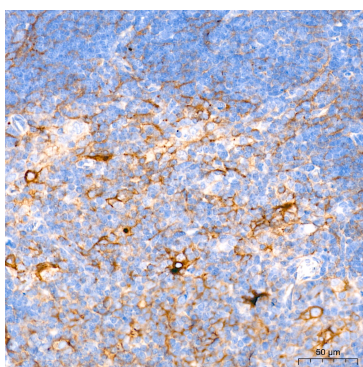
Blocking buffer: 3% nonfat dry milk in TBST.

Detection: ECL Basic Kit (RM00020).

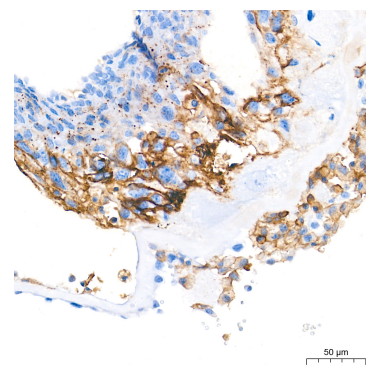
Exposure time: 10 s.



Confocal imaging of RAW 264.7 cells (treated with IFN- γ) and RAW 264.7 cells (untreated) using PD-L1/CD274 Rabbit pAb (A1645SP, dilution 1:200) followed by a further incubation with Cy3-conjugated Goat anti-Rabbit IgG (H+L) (AS007, dilution 1:500) (Red). DAPI was used for nuclear staining (Blue). Objective: 100x.



Immunohistochemistry analysis of paraffin-embedded Mouse thymus tissue using PD-L1/CD274 Rabbit pAb (A1645SP) at a dilution of 1:600 (40x lens). High pressure antigen retrieval performed with 0.01M Tris-EDTA Buffer (pH 9.0) prior to IHC staining.



Immunohistochemistry analysis of paraffin-embedded Mouse placenta tissue using PD-L1/CD274 Rabbit pAb (A1645SP) at a dilution of 1:600 (40x lens). High pressure antigen retrieval performed with 0.01M Tris-EDTA Buffer (pH 9.0) prior to IHC staining.