

PLAA Rabbit pAb

Catalog No.: A16466

Basic Information

Observed MW

Calculated MW

87kDa

Category

Primary antibody

Applications

ELISA, IHC-P

Cross-Reactivity

Human, Mouse, Rat

Background

Predicted to enable ubiquitin binding activity. Involved in cellular response to lipopolysaccharide; macroautophagy; and positive regulation of phospholipase A2 activity. Located in cytoplasm; extracellular exosome; and nucleus.

Recommended Dilutions

IHC-P 1:50 - 1:200

Immunogen Information

Gene ID

9373

Swiss Prot

Q9Y263

Immunogen

Recombinant fusion protein containing a sequence corresponding to amino acids 536-795 of human PLAA (NP_001026859.1).

Synonyms

DOA1; PLAP; PLA2P; NDMSBA; PLAA

Contact

☎ | 400-999-6126

✉ | cn.market@abclonal.com.cn

🌐 | www.abclonal.com.cn

Product Information

Source

Rabbit

Isotype

IgG

Purification

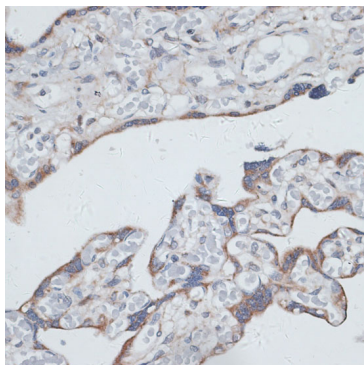
Affinity purification

Storage

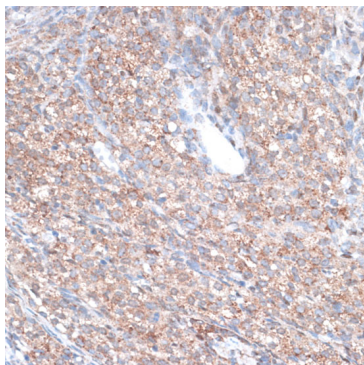
Store at -20°C. Avoid freeze / thaw cycles.

Buffer: PBS with 0.02% sodium azide, 50% glycerol, pH 7.3.

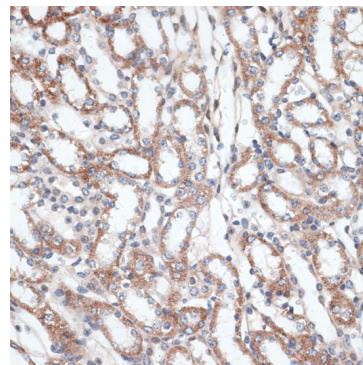
Validation Data



Immunohistochemistry analysis of PLAA in paraffin-embedded human placenta using PLAA Rabbit pAb (A16466) at dilution of 1:100 (40x lens). Perform microwave antigen retrieval with 10 mM PBS buffer pH 7.2 before commencing with IHC staining protocol.



Immunohistochemistry analysis of PLAA in paraffin-embedded rat ovary using PLAA Rabbit pAb (A16466) at dilution of 1:100 (40x lens). Perform microwave antigen retrieval with 10 mM PBS buffer pH 7.2 before commencing with IHC staining protocol.



Immunohistochemistry analysis of PLAA in paraffin-embedded mouse kidney using PLAA Rabbit pAb (A16466) at dilution of 1:100 (40x lens). Perform microwave antigen retrieval with 10 mM PBS buffer pH 7.2 before commencing with IHC staining protocol.