

IKK ϵ Rabbit pAb

Catalog No.: A16470 **1 Publications**

Basic Information

Observed MW

110kDa

Calculated MW

80kDa

Category

Primary antibody

Applications

ELISA,WB,IP

Cross-Reactivity

Human, Mouse

Background

IKBKE is a noncanonical I-kappa-B (see MIM 164008) kinase (IKK) that is essential for regulating antiviral signaling pathways. IKBKE has also been identified as a breast cancer (MIM 114480) oncogene and is amplified and overexpressed in over 30% of breast carcinomas and breast cancer cell lines (Hutti et al., 2009 [PubMed 19481526]).

Recommended Dilutions

WB 1:500 - 1:2000

IP 0.5 μ g-4 μ g antibody for
200 μ g-400 μ g extracts of
whole cells

Immunogen Information

Gene ID

9641

Swiss Prot

Q14164

Immunogen

Recombinant fusion protein containing a sequence corresponding to amino acids 460-620 of human IKK ϵ (NP_001180251.1).

Synonyms

IKKE; IKKI; IKK-E; IKK-i; IKK ϵ

Contact

 | 400-999-6126

 | cn.market@abclonal.com.cn

 | www.abclonal.com.cn

Product Information

Source

Rabbit

Isotype

IgG

Purification

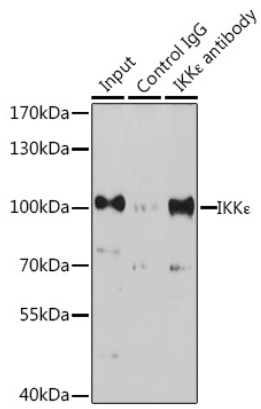
Affinity purification

Storage

Store at -20°C. Avoid freeze / thaw cycles.

Buffer: PBS with 0.02% sodium azide,50% glycerol,pH7.3.

Validation Data



Immunoprecipitation analysis of 200 µg extracts of K-562 cells, using 3 µg IKKε antibody (A16470). Western blot was performed from the immunoprecipitate using IKKε antibody (A16470) at a dilution of 1:1000.