

PARP2 Rabbit pAb

Catalog No.: A16475

Basic Information

Observed MW

66kDa

Calculated MW

66kDa

Category

Primary antibody

Applications

ELISA, WB

Cross-Reactivity

Mouse, Rat

Background

This gene encodes poly(ADP-ribose)transferase-like 2 protein, which contains a catalytic domain and is capable of catalyzing a poly(ADP-ribose)ation reaction. This protein has a catalytic domain which is homologous to that of poly (ADP-ribose) transferase, but lacks an N-terminal DNA binding domain which activates the C-terminal catalytic domain of poly (ADP-ribose) transferase. The basic residues within the N-terminal region of this protein may bear potential DNA-binding properties, and may be involved in the nuclear and/or nucleolar targeting of the protein. Two alternatively spliced transcript variants encoding distinct isoforms have been found.

Recommended Dilutions

WB 1:500 - 1:2000

Immunogen Information

Gene ID

10038

Swiss Prot

Q9UGN5

Immunogen

A synthetic peptide corresponding to a sequence within amino acids 450-550 of human PARP2 (NP_001036083.1).

Synonyms

ARTD2; ADPRT2; PARP-2; ADPRTL2; ADPRTL3; pADPRT-2; PARP2

Contact

☎ | 400-999-6126

✉ | cn.market@abclonal.com.cn

🌐 | www.abclonal.com.cn

Product Information

Source

Rabbit

Isotype

IgG

Purification

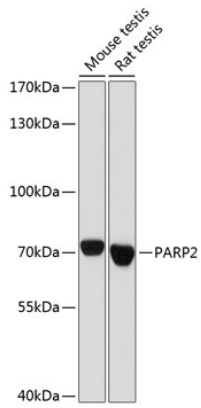
Affinity purification

Storage

Store at -20°C. Avoid freeze / thaw cycles.

Buffer: PBS with 0.01% thimerosal, 50% glycerol, pH7.3.

Validation Data



Western blot analysis of various lysates using PARP2 Rabbit pAb (A16475) at 1:1000 dilution.
Secondary antibody: HRP Goat Anti-Rabbit IgG (H+L) (AS014) at 1:10000 dilution.
Lysates/proteins: 25µg per lane.
Blocking buffer: 3% nonfat dry milk in TBST.
Detection: ECL Basic Kit (RM00020).
Exposure time: 10s.