

# EFS Rabbit pAb

**Catalog No.: A16479**

## Basic Information

### Observed MW

75kDa

### Calculated MW

59kDa

### Category

Primary antibody

### Applications

ELISA,WB

### Cross-Reactivity

Mouse

## Background

The protein encoded by this gene is a member of the CAS (CRK-associated substrate) family of adaptor proteins which typically serve as scaffolds for the assembly of larger signaling complexes. These complexes form at the cell surface where integrin binding leads to the subsequent phosphorylation of a CAS protein. Additional binding of SRC family kinases leads to CAS hyperphosphorylation and the creation of binding sites for CRK and other proteins that cause actin cytoskeleton reorganization. This gene plays a role in integrin-mediated cell attachment, spreading, and migration and also plays a role in both normal and malignant cellular transformation. This broadly expressed gene has been shown to play a role in neurite outgrowth and its expression in the thymus and lymphocytes is important for T cell maturation and the development of immunological self-tolerance. Alternative splicing of this gene results in multiple transcript variants encoding distinct isoforms.

## Recommended Dilutions

**WB** 1:500 - 1:2000

## Immunogen Information

### Gene ID

10278

### Swiss Prot

O43281

### Immunogen

Recombinant fusion protein containing a sequence corresponding to amino acids 60-190 of human EFS (NP\_115835.1).

### Synonyms

SIN; CAS3; EFS1; EFS2; HEFS; CASS3; EFS

## Contact

☎ | 400-999-6126

✉ | [cn.market@abclonal.com.cn](mailto:cn.market@abclonal.com.cn)

🌐 | [www.abclonal.com.cn](http://www.abclonal.com.cn)

## Product Information

### Source

Rabbit

### Isotype

IgG

### Purification

Affinity purification

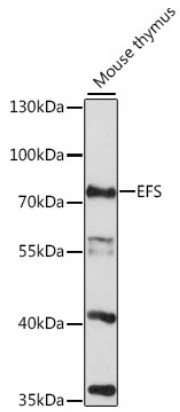
### Storage

Store at -20°C. Avoid freeze / thaw cycles.

Buffer: PBS with 0.01% thimerosal, 50% glycerol, pH7.3.

## Validation Data

---



Western blot analysis of lysates from mouse thymus, using EFS Rabbit pAb (A16479) at 1:1000 dilution.  
Secondary antibody: HRP Goat Anti-Rabbit IgG (H+L) (AS014) at 1:10000 dilution.  
Lysates/proteins: 25µg per lane.  
Blocking buffer: 3% nonfat dry milk in TBST.  
Detection: ECL Basic Kit (RM00020).  
Exposure time: 90s.