

# ACHA4 Rabbit pAb

Catalog No.: A1648

## Basic Information

### Observed MW

70kDa

### Calculated MW

70kDa

### Category

Primary antibody

### Applications

ELISA,WB,IF

### Cross-Reactivity

Mouse

## Background

This gene encodes a nicotinic acetylcholine receptor, which belongs to a superfamily of ligand-gated ion channels that play a role in fast signal transmission at synapses. These pentameric receptors can bind acetylcholine, which causes an extensive change in conformation that leads to the opening of an ion-conducting channel across the plasma membrane. This protein is an integral membrane receptor subunit that can interact with either nAChR beta-2 or nAChR beta-4 to form a functional receptor. Mutations in this gene cause nocturnal frontal lobe epilepsy type 1. Polymorphisms in this gene that provide protection against nicotine addiction have been described. Alternative splicing results in multiple transcript variants.

## Recommended Dilutions

WB	1:500 - 1:2000
IF	1:50 - 1:200

## Immunogen Information

### Gene ID

1137

### Swiss Prot

P43681

### Immunogen

Recombinant fusion protein containing a sequence corresponding to amino acids 29-242 of human ACHA4 (P43681).

### Synonyms

EBN; BFNC; EBN1; NACHR; NACRA4; NACHRA4; ACHA4

## Contact

☎ | 400-999-6126

✉ | [cn.market@abclonal.com.cn](mailto:cn.market@abclonal.com.cn)

🌐 | [www.abclonal.com.cn](http://www.abclonal.com.cn)

## Product Information

### Source

Rabbit

### Isotype

IgG

### Purification

Affinity purification

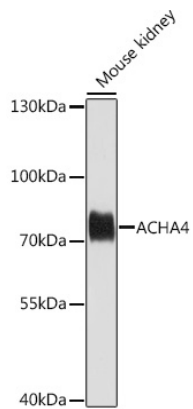
### Storage

Store at -20°C. Avoid freeze / thaw cycles.

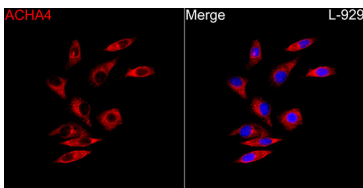
Buffer: PBS with 0.02% sodium azide,50% glycerol,pH7.3.

## Validation Data

---



Western blot analysis of lysates from mouse kidney, using ACHA4 Rabbit pAb (A1648) at 1:1000 dilution.  
Secondary antibody: HRP Goat Anti-Rabbit IgG (H+L) (AS014) at 1:10000 dilution.  
Lysates/proteins: 25µg per lane.  
Blocking buffer: 3% nonfat dry milk in TBST.  
Detection: ECL Basic Kit (RM00020).  
Exposure time: 60s.



Immunofluorescence analysis of L-929 cells using ACHA4 Rabbit pAb (A1648) at a dilution of 1:100 (40x lens). Secondary antibody: Cy3-conjugated Goat anti-Rabbit IgG (H+L)(AS007) at 1:500 dilution. Blue: DAPI for nuclear staining.