

ARFGEF1 Rabbit pAb

Catalog No.: A16483

Basic Information

Observed MW

200kDa

Calculated MW

209kDa

Category

Primary antibody

Applications

ELISA, WB

Cross-Reactivity

Human

Background

ADP-ribosylation factors (ARFs) play an important role in intracellular vesicular trafficking. The protein encoded by this gene is involved in the activation of ARFs by accelerating replacement of bound GDP with GTP. It contains a Sec7 domain, which may be responsible for guanine-nucleotide exchange activity and also brefeldin A inhibition.

Recommended Dilutions

WB 1:500 - 1:2000

Immunogen Information

Gene ID

10565

Swiss Prot

Q9Y6D6

Immunogen

Recombinant fusion protein containing a sequence corresponding to amino acids 220-420 of human ARFGEF1 (NP_006412.2).

Synonyms

BIG1; P200; DEDISB; ARFGEP1; ARFGEF1

Contact

☎ | 400-999-6126

✉ | cn.market@abclonal.com.cn

🌐 | www.abclonal.com.cn

Product Information

Source

Rabbit

Isotype

IgG

Purification

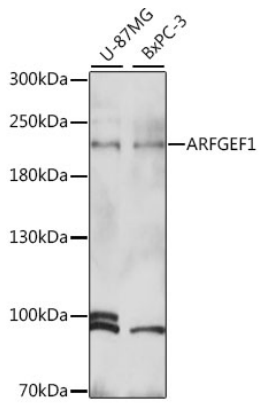
Affinity purification

Storage

Store at -20°C. Avoid freeze / thaw cycles.

Buffer: PBS with 0.01% thimerosal, 50% glycerol, pH7.3.

Validation Data



Western blot analysis of various lysates using ARFGEF1 Rabbit pAb (A16483) at 1:1000 dilution.
Secondary antibody: HRP Goat Anti-Rabbit IgG (H+L) (AS014) at 1:10000 dilution.
Lysates/proteins: 25µg per lane.
Blocking buffer: 3% nonfat dry milk in TBST.
Detection: ECL Basic Kit (RM00020).
Exposure time: 5s.