

NPRL2 Rabbit pAb

Catalog No.: A16486

Basic Information

Observed MW

44kDa

Calculated MW

44kDa

Category

Primary antibody

Applications

ELISA, WB

Cross-Reactivity

Human, Rat

Background

Enables protein kinase activity. Contributes to GTPase activator activity. Involved in cellular response to amino acid starvation; negative regulation of TOR signaling; and negative regulation of kinase activity. Located in lysosomal membrane. Part of GATOR1 complex. Implicated in focal epilepsy.

Recommended Dilutions

WB 1:500 - 1:2000

Immunogen Information

Gene ID

10641

Swiss Prot

Q8WTW4

Immunogen

Recombinant fusion protein containing a sequence corresponding to amino acids 1-220 of human NPRL2 (NP_006536.3).

Synonyms

NPR2; NPR2L; TUSC4; FFEVF2; NPRL2

Contact

 | 400-999-6126

 | cn.market@abclonal.com.cn

 | www.abclonal.com.cn

Product Information

Source

Rabbit

Isotype

IgG

Purification

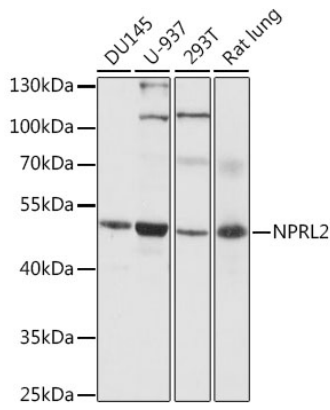
Affinity purification

Storage

Store at -20°C. Avoid freeze / thaw cycles.

Buffer: PBS with 0.01% thimerosal, 50% glycerol, pH7.3.

Validation Data



Western blot analysis of various lysates using NPRL2 Rabbit pAb (A16486) at 1:1000 dilution.
Secondary antibody: HRP Goat Anti-Rabbit IgG (H+L) (AS014) at 1:10000 dilution.
Lysates/proteins: 25µg per lane.
Blocking buffer: 3% nonfat dry milk in TBST.
Detection: ECL Basic Kit (RM00020).
Exposure time: 10s.