

SRSF1/SF2/ASF Rabbit pAb

Catalog No.: A1649

Basic Information

Observed MW

21kDa/28kDa/33kDa

Calculated MW

28kDa

Category

Primary antibody

Applications

ELISA, WB

Cross-Reactivity

Human, Mouse, Rat

Background

This gene encodes a member of the arginine/serine-rich splicing factor protein family. The encoded protein can either activate or repress splicing, depending on its phosphorylation state and its interaction partners. Multiple transcript variants have been found for this gene. There is a pseudogene of this gene on chromosome 13.

Recommended Dilutions

WB 1:500 - 1:1000

Immunogen Information

Gene ID

6426

Swiss Prot

Q07955

Immunogen

A synthetic peptide corresponding to a sequence within amino acids 1-248 of human SRSF1/SF2/ASF (NP_008855.1).

Synonyms

ASF; SF2; SFRS1; SF2p33; SRp30a; SRSF1/SF2/ASF

Contact

 | 400-999-6126

 | cn.market@abclonal.com.cn

 | www.abclonal.com.cn

Product Information

Source

Rabbit

Isotype

IgG

Purification

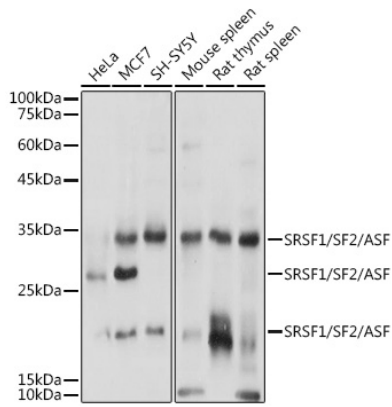
Affinity purification

Storage

Store at -20°C. Avoid freeze / thaw cycles.

Buffer: PBS with 0.05% proclin300, 50% glycerol, pH7.3.

Validation Data



Western blot analysis of extracts of various cell lines, using SRSF1/SF2/ASF antibody (A1649) at 1:1000 dilution.

Secondary antibody: HRP Goat Anti-Rabbit IgG (H+L) (AS014) at 1:10000 dilution.

Lysates/proteins: 25µg per lane.

Blocking buffer: 3% nonfat dry milk in TBST.

Detection: ECL Basic Kit (RM00020).

Exposure time: 1s.