

# CAND2 Rabbit pAb

Catalog No.: A16500

## Basic Information

### Observed MW

130kDa

### Calculated MW

135kDa

### Category

Primary antibody

### Applications

ELISA, WB, IHC-P

### Cross-Reactivity

Human, Mouse, Rat

## Background

Predicted to enable TBP-class protein binding activity. Predicted to be involved in SCF complex assembly; positive regulation of transcription, DNA-templated; and protein ubiquitination. Located in cytosol.

## Recommended Dilutions

WB 1:500 - 1:2000

IHC-P 1:50 - 1:200

## Immunogen Information

### Gene ID

23066

### Swiss Prot

O75155

### Immunogen

Recombinant fusion protein containing a sequence corresponding to amino acids 850-1000 of human CAND2 (NP\_001155971.1).

### Synonyms

Tp120b; TIP120B; CAND2

## Contact

☎ | 400-999-6126

✉ | [cn.market@abclonal.com.cn](mailto:cn.market@abclonal.com.cn)

🌐 | [www.abclonal.com.cn](http://www.abclonal.com.cn)

## Product Information

### Source

Rabbit

### Isotype

IgG

### Purification

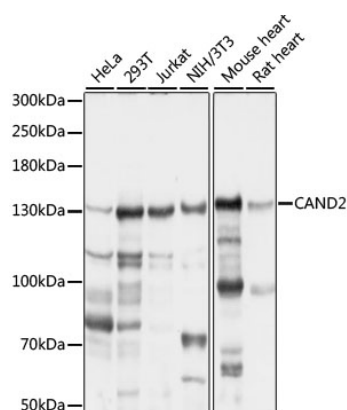
Affinity purification

### Storage

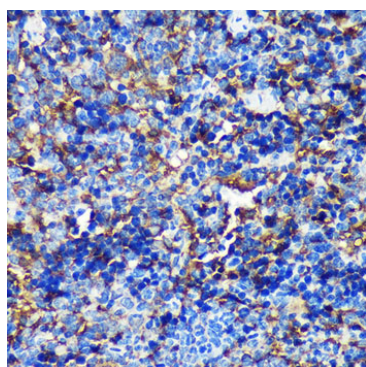
Store at -20°C. Avoid freeze / thaw cycles.

Buffer: PBS with 0.01% thimerosal, 50% glycerol, pH7.3.

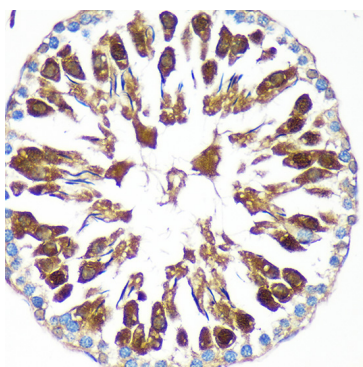
## Validation Data



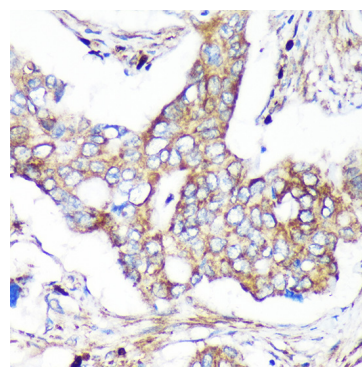
Western blot analysis of various lysates using CAND2 Rabbit pAb (A16500) at 1:1000 dilution. Secondary antibody: HRP Goat Anti-Rabbit IgG (H+L) (AS014) at 1:10000 dilution. Lysates/proteins: 25µg per lane. Blocking buffer: 3% nonfat dry milk in TBST. Detection: ECL Basic Kit (RM00020). Exposure time: 15s.



Immunohistochemistry analysis of CAND2 in paraffin-embedded Mouse spleen using CAND2 Rabbit pAb (A16500) at dilution of 1:100 (40x lens). Perform microwave antigen retrieval with 10 mM PBS buffer pH 7.2 before commencing with IHC staining protocol.



Immunohistochemistry analysis of CAND2 in paraffin-embedded Rat testis using CAND2 Rabbit pAb (A16500) at dilution of 1:100 (40x lens). Perform microwave antigen retrieval with 10 mM PBS buffer pH 7.2 before commencing with IHC staining protocol.



Immunohistochemistry analysis of CAND2 in paraffin-embedded Human colon carcinoma using CAND2 Rabbit pAb (A16500) at dilution of 1:100 (40x lens). Perform microwave antigen retrieval with 10 mM PBS buffer pH 7.2 before commencing with IHC staining protocol.