

# NGEF Rabbit pAb

Catalog No.: A16507

## Basic Information

### Observed MW

82kDa

### Calculated MW

82kDa

### Category

Primary antibody

### Applications

ELISA, WB, IF/ICC

### Cross-Reactivity

Human, Mouse, Rat

## Background

Enables guanyl-nucleotide exchange factor activity. Predicted to be involved in several processes, including activation of GTPase activity; ephrin receptor signaling pathway; and negative regulation of dendritic spine morphogenesis. Predicted to be located in cytosol. Predicted to be active in glutamatergic synapse.

## Recommended Dilutions

WB 1:500 - 1:2000

IF/ICC 1:50 - 1:100

## Immunogen Information

### Gene ID

25791

### Swiss Prot

Q8N5V2

### Immunogen

Recombinant fusion protein containing a sequence corresponding to amino acids 429-710 of human NGEF (NP\_062824.2).

### Synonyms

EPHEXIN; ARHGEF27; NGEF

## Contact

☎ | 400-999-6126

✉ | [cn.market@abclonal.com.cn](mailto:cn.market@abclonal.com.cn)

🌐 | [www.abclonal.com.cn](http://www.abclonal.com.cn)

## Product Information

### Source

Rabbit

### Isotype

IgG

### Purification

Affinity purification

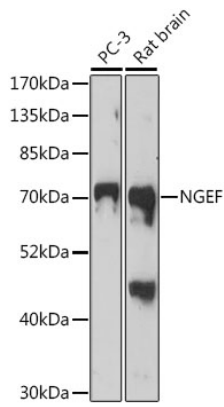
### Storage

Store at -20°C. Avoid freeze / thaw cycles.

Buffer: PBS with 0.01% thimerosal, 50% glycerol, pH7.3.

## Validation Data

---



Western blot analysis of various lysates using NGEF Rabbit pAb (A16507) at 1:1000 dilution.  
Secondary antibody: HRP Goat Anti-Rabbit IgG (H+L) (AS014) at 1:10000 dilution.  
Lysates/proteins: 25 $\mu$ g per lane.  
Blocking buffer: 3% nonfat dry milk in TBST.  
Detection: ECL Basic Kit (RM00020).  
Exposure time: 3min.