

P2RY10 Rabbit pAb

Catalog No.: A16517

Basic Information

Observed MW

42kDa

Calculated MW

39kDa

Category

Primary antibody

Applications

ELISA, WB

Cross-Reactivity

Human, Mouse, Rat

Background

The protein encoded by this gene belongs to the family of G-protein coupled receptors that are preferentially activated by adenosine and uridine nucleotides. There is a pseudogene for this gene nearby on chromosome X. Multiple alternatively spliced transcripts have been observed.

Recommended Dilutions

WB 1:500 - 1:2000

Immunogen Information

Gene ID

27334

Swiss Prot

O00398

Immunogen

A synthetic peptide corresponding to a sequence within amino acids 200 to the C-terminus of human P2RY10 (NP_001311147.1).

Synonyms

LPS2; P2Y10; LYPSR2; P2RY10

Contact

☎ | 400-999-6126

✉ | cn.market@abclonal.com.cn

🌐 | www.abclonal.com.cn

Product Information

Source

Rabbit

Isotype

IgG

Purification

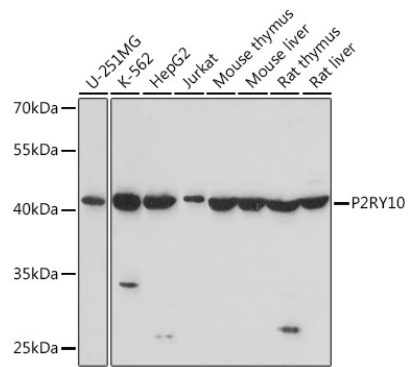
Affinity purification

Storage

Store at -20°C. Avoid freeze / thaw cycles.

Buffer: PBS with 0.01% thimerosal, 50% glycerol, pH7.3.

Validation Data



Western blot analysis of various lysates using P2RY10 Rabbit pAb (A16517) at 1:1000 dilution.
Secondary antibody: HRP Goat Anti-Rabbit IgG (H+L) (AS014) at 1:10000 dilution.
Lysates/proteins: 25µg per lane.
Blocking buffer: 3% nonfat dry milk in TBST.
Detection: ECL Basic Kit (RM00020).
Exposure time: 45s.