

COMMD5 Rabbit pAb

Catalog No.: A16518

Basic Information

Observed MW

30kDa

Calculated MW

25kDa

Category

Primary antibody

Applications

ELISA, WB, IF/ICC

Cross-Reactivity

Human, Mouse, Rat

Background

Predicted to be involved in proximal tubule morphogenesis. Located in cytosol and nucleoplasm.

Recommended Dilutions

WB 1:1000 - 1:5000

IF/ICC 1:50 - 1:200

Immunogen Information

Gene ID

28991

Swiss Prot

Q9GZQ3

Immunogen

Recombinant fusion protein containing a sequence corresponding to amino acids 1-224 of human COMMD5 (NP_054785.2).

Synonyms

HCARG; HT002; COMMD5

Contact

 | 400-999-6126

 | cn.market@abclonal.com.cn

 | www.abclonal.com.cn

Product Information

Source

Rabbit

Isotype

IgG

Purification

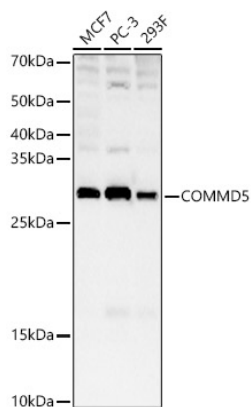
Affinity purification

Storage

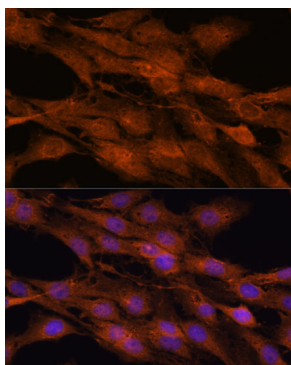
Store at -20°C. Avoid freeze / thaw cycles.

Buffer: PBS with 0.01% thimerosal, 50% glycerol, pH7.3.

Validation Data



Western blot analysis of various lysates, using COMMD5 Rabbit pAb (A16518) at 1:3000 dilution.
Secondary antibody: HRP Goat Anti-Rabbit IgG (H+L) (AS014) at 1:10000 dilution.
Lysates/proteins: 25µg per lane.
Blocking buffer: 3% nonfat dry milk in TBST.
Detection: ECL Basic Kit (RM00020).
Exposure time: 90s.



Immunofluorescence analysis of C6 cells using COMMD5 antibody (A16518) at dilution of 1:100. Blue: DAPI for nuclear staining.