

PCF11 Rabbit pAb

Catalog No.: A16533

Basic Information

Observed MW

180kDa

Calculated MW

173kDa

Category

Primary antibody

Applications

ELISA, WB

Cross-Reactivity

Human, Mouse

Background

The protein encoded by this gene binds to CLP1 to form pre-mRNA cleavage factor IIm. The encoded protein is necessary for efficient Pol II transcription termination and may be involved in degradation of the 3' product of polyA site cleavage.

Recommended Dilutions

WB 1:500 - 1:2000

Immunogen Information

Gene ID

51585

Swiss Prot

O94913

Immunogen

Recombinant fusion protein containing a sequence corresponding to amino acids 1256-1555 of human PCF11 (NP_056969.2).

Synonyms

PCF11

Contact

 | 400-999-6126

 | cn.market@abclonal.com.cn

 | www.abclonal.com.cn

Product Information

Source

Rabbit

Isotype

IgG

Purification

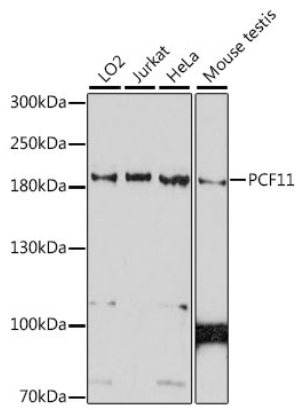
Affinity purification

Storage

Store at -20°C. Avoid freeze / thaw cycles.

Buffer: PBS with 0.01% thimerosal, 50% glycerol, pH7.3.

Validation Data



Western blot analysis of various lysates using PCF11 Rabbit pAb (A16533) at 1:1000 dilution.
Secondary antibody: HRP Goat Anti-Rabbit IgG (H+L) (AS014) at 1:10000 dilution.
Lysates/proteins: 25µg per lane.
Blocking buffer: 3% nonfat dry milk in TBST.
Detection: ECL Basic Kit (RM00020).
Exposure time: 90s.