

# LIN7C Rabbit pAb

Catalog No.: A16544

## Basic Information

### Observed MW

25kDa

### Calculated MW

22kDa

### Category

Primary antibody

### Applications

ELISA, WB

### Cross-Reactivity

Human, Mouse, Rat

## Background

Enables L27 domain binding activity and cytoskeletal protein binding activity. Involved in morphogenesis of an epithelial sheet. Located in cell-cell junction; cytoplasm; and plasma membrane. Part of MPP7-DLG1-LIN7 complex.

## Recommended Dilutions

WB 1:500 - 1:2000

## Immunogen Information

### Gene ID

55327

### Swiss Prot

Q9NUP9

### Immunogen

Recombinant fusion protein containing a sequence corresponding to amino acids 1-70 of human LIN7C (NP\_060832.1).

### Synonyms

MALS3; VELI3; LIN-7C; MALS-3; LIN-7-C; LIN7C

## Contact

 | 400-999-6126

 | [cn.market@abclonal.com.cn](mailto:cn.market@abclonal.com.cn)

 | [www.abclonal.com.cn](http://www.abclonal.com.cn)

## Product Information

### Source

Rabbit

### Isotype

IgG

### Purification

Affinity purification

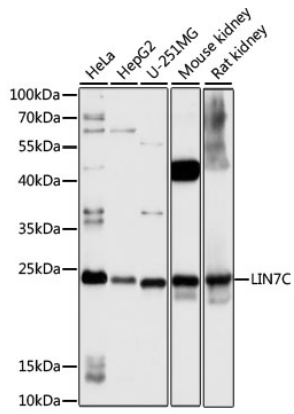
### Storage

Store at -20°C. Avoid freeze / thaw cycles.

Buffer: PBS with 0.01% thimerosal, 50% glycerol, pH7.3.

## Validation Data

---



Western blot analysis of various lysates using LIN7C Rabbit pAb (A16544) at 1:1000 dilution.  
Secondary antibody: HRP Goat Anti-Rabbit IgG (H+L) (AS014) at 1:10000 dilution.  
Lysates/proteins: 25µg per lane.  
Blocking buffer: 3% nonfat dry milk in TBST.  
Detection: ECL Basic Kit (RM00020).  
Exposure time: 3s.