

CPXM1 Rabbit pAb

Catalog No.: A16552

Basic Information

Observed MW

81kDa

Calculated MW

82kDa

Category

Primary antibody

Applications

ELISA, WB

Cross-Reactivity

Human, Mouse

Background

This gene likely encodes a member of the carboxypeptidase family of proteins. Cloning of a comparable locus in mouse indicates that the encoded protein contains a discoidin domain and a carboxypeptidase domain, but the protein appears to lack residues necessary for carboxypeptidase activity.

Recommended Dilutions

WB 1:500 - 1:2000

Immunogen Information

Gene ID

56265

Swiss Prot

Q96SM3

Immunogen

Recombinant fusion protein containing a sequence corresponding to amino acids 435-734 of human CPXM1 (Q96SM3).

Synonyms

CPX1; CPXM; CPXM1

Contact

 | 400-999-6126

 | cn.market@abclonal.com.cn

 | www.abclonal.com.cn

Product Information

Source

Rabbit

Isotype

IgG

Purification

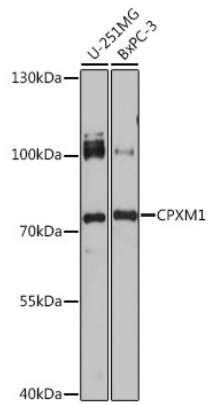
Affinity purification

Storage

Store at -20°C. Avoid freeze / thaw cycles.

Buffer: PBS with 0.01% thimerosal, 50% glycerol, pH 7.3.

Validation Data



Western blot analysis of various lysates using CPXM1 Rabbit pAb (A16552) at 1:1000 dilution.
Secondary antibody: HRP Goat Anti-Rabbit IgG (H+L) (AS014) at 1:10000 dilution.
Lysates/proteins: 25µg per lane.
Blocking buffer: 3% nonfat dry milk in TBST.
Detection: ECL Basic Kit (RM00020).
Exposure time: 200s.