

# GPR108 Rabbit pAb

Catalog No.: A16554

## Basic Information

### Observed MW

76kDa

### Calculated MW

61kDa

### Category

Primary antibody

### Applications

ELISA, WB

### Cross-Reactivity

Human, Mouse, Rat

## Background

Predicted to be involved in negative regulation of toll-like receptor signaling pathway.  
Located in trans-Golgi network.

## Recommended Dilutions

WB 1:1000 - 1:5000

## Immunogen Information

### Gene ID

56927

### Swiss Prot

Q9NPR9

### Immunogen

Recombinant fusion protein containing a sequence corresponding to amino acids 33-260 of human GPR108 (NP\_001073921.1).

### Synonyms

LUSTR2; GPR108

## Contact

☎ | 400-999-6126

✉ | [cn.market@abclonal.com.cn](mailto:cn.market@abclonal.com.cn)

🌐 | [www.abclonal.com.cn](http://www.abclonal.com.cn)

## Product Information

### Source

Rabbit

### Isotype

IgG

### Purification

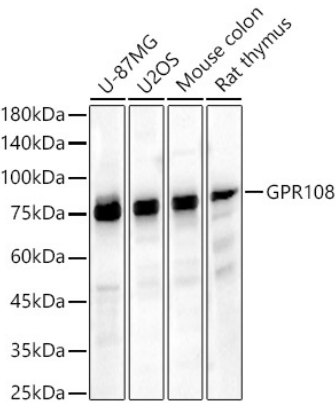
Affinity purification

### Storage

Store at -20°C. Avoid freeze / thaw cycles.

Buffer: PBS with 0.01% thimerosal, 50% glycerol, pH7.3.

Validation Data



Western blot analysis of various lysates, using GPR108 Rabbit pAb (A16554) at 1:2000 dilution.  
Secondary antibody: HRP Goat Anti-Rabbit IgG (H+L) (AS014) at 1:10000 dilution.  
Lysates/proteins: 25µg per lane.  
Blocking buffer: 3% nonfat dry milk in TBST.  
Detection: ECL Basic Kit (RM00020).  
Exposure time: 25s.