

# Steroidogenic factor-1 (SF-1/NR5A1) Rabbit pAb

Catalog No.: A1657 **2 Publications**

## Basic Information

### Observed MW

50kDa

### Calculated MW

52kDa

### Category

Primary antibody

### Applications

ELISA, WB

### Cross-Reactivity

Human, Mouse, Rat

## Background

The protein encoded by this gene is a transcriptional activator involved in sex determination. The encoded protein binds DNA as a monomer. Defects in this gene are a cause of XY sex reversal with or without adrenal failure as well as adrenocortical insufficiency without ovarian defect.

## Recommended Dilutions

WB 1:500 - 1:1000

## Immunogen Information

### Gene ID

2516

### Swiss Prot

Q13285

### Immunogen

Recombinant fusion protein containing a sequence corresponding to amino acids 1-120 of human Steroidogenic factor-1 (SF-1/Steroidogenic factor-1 (SF-1/NR5A1)) (NP\_004950.2).

### Synonyms

ELP; SF1; FTZ1; POF7; SF-1; AD4BP; FTZF1; SPGF8; SRXX4; SRXY3; hSF-1; Steroidogenic factor-1 (SF-1/NR5A1)

## Contact

 | 400-999-6126

 | [cn.market@abclonal.com.cn](mailto:cn.market@abclonal.com.cn)

 | [www.abclonal.com.cn](http://www.abclonal.com.cn)

## Product Information

### Source

Rabbit

### Isotype

IgG

### Purification

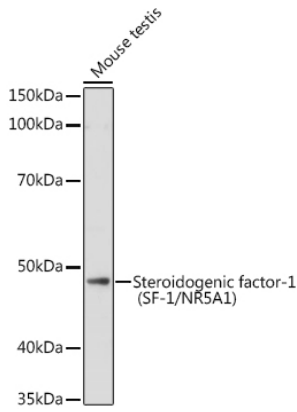
Affinity purification

### Storage

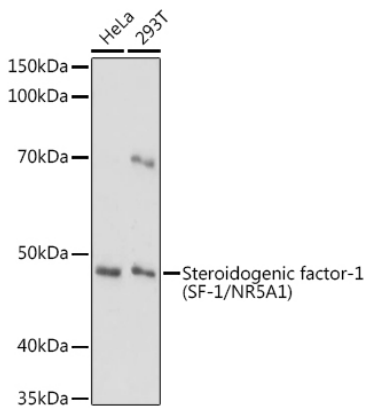
Store at -20°C. Avoid freeze / thaw cycles.

Buffer: PBS with 0.01% thimerosal, 50% glycerol, pH7.3.

## Validation Data



Western blot analysis of lysates from Mouse testis, using Steroidogenic factor-1 (SF-1/NR5A1) Rabbit pAb (A1657) at 1:1000 dilution.  
Secondary antibody: HRP Goat Anti-Rabbit IgG (H+L) (AS014) at 1:10000 dilution.  
Lysates/proteins: 25µg per lane.  
Blocking buffer: 3% nonfat dry milk in TBST.  
Detection: ECL Basic Kit (RM00020).  
Exposure time: 60s.



Western blot analysis of various lysates using Steroidogenic factor-1 (SF-1/NR5A1) Rabbit pAb (A1657) at 1:1000 dilution.  
Secondary antibody: HRP Goat Anti-Rabbit IgG (H+L) (AS014) at 1:10000 dilution.  
Lysates/proteins: 25µg per lane.  
Blocking buffer: 3% nonfat dry milk in TBST.  
Detection: ECL Basic Kit (RM00020).  
Exposure time: 180s.