

HKDC1 Rabbit pAb

Catalog No.: A16573 **1 Publications**

Basic Information

Observed MW

120kDa

Calculated MW

103kDa

Category

Primary antibody

Applications

ELISA, WB

Cross-Reactivity

Human

Background

This gene encodes a member of the hexokinase protein family. The encoded protein is involved in glucose metabolism, and reduced expression may be associated with gestational diabetes mellitus. High expression of this gene may also be associated with poor prognosis in hepatocarcinoma.

Recommended Dilutions

WB 1:500 - 1:2000

Immunogen Information

Gene ID

80201

Swiss Prot

Q2TB90

Immunogen

A synthetic peptide corresponding to a sequence within amino acids 150-250 of human HKDC1 (NP_079406.3).

Synonyms

RP92; HKDC1

Contact

 | 400-999-6126

 | cn.market@abclonal.com.cn

 | www.abclonal.com.cn

Product Information

Source

Rabbit

Isotype

IgG

Purification

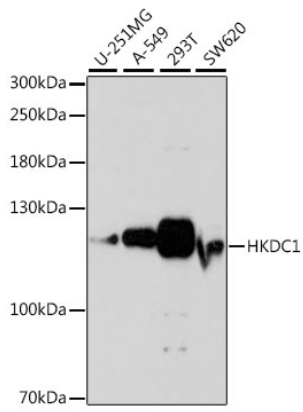
Affinity purification

Storage

Store at -20°C. Avoid freeze / thaw cycles.

Buffer: PBS with 0.01% thimerosal, 50% glycerol, pH7.3.

Validation Data



Western blot analysis of various lysates using HKDC1 Rabbit pAb (A16573) at 1:1000 dilution.
Secondary antibody: HRP Goat Anti-Rabbit IgG (H+L) (AS014) at 1:10000 dilution.
Lysates/proteins: 25µg per lane.
Blocking buffer: 3% nonfat dry milk in TBST.
Detection: ECL Basic Kit (RM00020).
Exposure time: 60s.