

KLHL15 Rabbit pAb

Catalog No.: A16574

Basic Information

Observed MW

70kDa

Calculated MW

70kDa

Category

Primary antibody

Applications

ELISA, WB

Cross-Reactivity

Human, Mouse, Rat

Background

This gene encodes a member of the kelch-like family of proteins that share a common domain structure consisting of an N-terminal broad-complex, tramtrack, bric-a-brac/poxvirus and zinc finger domain and C-terminal kelch repeat motifs. The encoded protein may be involved in protein ubiquitination and cytoskeletal organization.

Recommended Dilutions

WB 1:500 - 1:2000

Immunogen Information

Gene ID

80311

Swiss Prot

Q96M94

Immunogen

Recombinant fusion protein containing a sequence corresponding to amino acids 1-300 of human KLHL15 (NP_085127.2).

Synonyms

XLID103; HEL-S-305; KLHL15

Contact

 | 400-999-6126

 | cn.market@abclonal.com.cn

 | www.abclonal.com.cn

Product Information

Source

Rabbit

Isotype

IgG

Purification

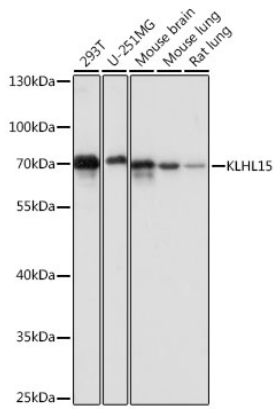
Affinity purification

Storage

Store at -20°C. Avoid freeze / thaw cycles.

Buffer: PBS with 0.01% thimerosal, 50% glycerol, pH7.3.

Validation Data



Western blot analysis of various lysates using KLHL15 Rabbit pAb (A16574) at 1:1000 dilution.
Secondary antibody: HRP Goat Anti-Rabbit IgG (H+L) (AS014) at 1:10000 dilution.
Lysates/proteins: 25µg per lane.
Blocking buffer: 3% nonfat dry milk in TBST.
Detection: ECL Basic Kit (RM00020).
Exposure time: 5s.