

YPEL3 Rabbit pAb

Catalog No.: A16578 **1 Publications**

Basic Information

Observed MW

17kDa

Calculated MW

14kDa

Category

Primary antibody

Applications

ELISA, WB

Cross-Reactivity

Mouse, Rat

Background

Predicted to enable metal ion binding activity. Involved in positive regulation of cellular senescence. Predicted to be located in nucleolus.

Recommended Dilutions

WB 1:500 - 1:2000

Immunogen Information

Gene ID

83719

Swiss Prot

P61236

Immunogen

Recombinant fusion protein containing a sequence corresponding to amino acids 1-119 of human YPEL3 (NP_001138996.1).

Synonyms

YPEL3

Contact

☎ | 400-999-6126

✉ | cn.market@abclonal.com.cn

🌐 | www.abclonal.com.cn

Product Information

Source

Rabbit

Isotype

IgG

Purification

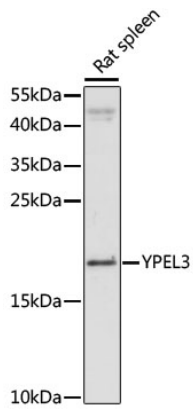
Affinity purification

Storage

Store at -20°C. Avoid freeze / thaw cycles.

Buffer: PBS with 0.01% thimerosal, 50% glycerol, pH7.3.

Validation Data



Western blot analysis of lysates from rat spleen, using YPEL3 Rabbit pAb (A16578) at 1:1000 dilution.
Secondary antibody: HRP Goat Anti-Rabbit IgG (H+L) (AS014) at 1:10000 dilution.
Lysates/proteins: 25µg per lane.
Blocking buffer: 3% nonfat dry milk in TBST.
Detection: ECL Basic Kit (RM00020).
Exposure time: 90s.