

# ARHGAP11B Rabbit pAb

Catalog No.: A16587

## Basic Information

### Observed MW

30kDa

### Calculated MW

30kDa

### Category

Primary antibody

### Applications

WB, ELISA

### Cross-Reactivity

Human

## Background

Predicted to enable GTPase activator activity. Involved in cerebral cortex development and negative regulation of mitochondrial membrane permeability. Acts upstream of with a positive effect on glutamine catabolic process. Located in mitochondrial matrix.

## Recommended Dilutions

**WB** 1:500 - 1:1000

**ELISA** Recommended starting concentration is 1 µg/mL. Please optimize the concentration based on your specific assay requirements.

## Immunogen Information

### Gene ID

89839

### Swiss Prot

Q3KRB8

### Immunogen

Recombinant fusion protein containing a sequence corresponding to amino acids 218-267 of human ARHGAP11B (NP\_001034930.1).

### Synonyms

B'-T; FAM7B1; GAP (1-8); ARHGAP11B

## Contact

 | 400-999-6126

 | [cn.market@abclonal.com.cn](mailto:cn.market@abclonal.com.cn)

 | [www.abclonal.com.cn](http://www.abclonal.com.cn)

## Product Information

### Source

Rabbit

### Isotype

IgG

### Purification

Affinity purification

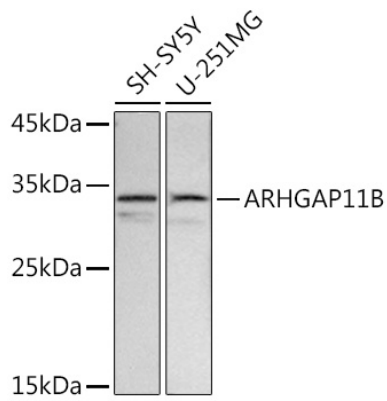
### Storage

Store at -20°C. Avoid freeze / thaw cycles.

Buffer: PBS with 0.01% thimerosal, 50% glycerol, pH7.3.

## Validation Data

---



Western blot analysis of various lysates using ARHGAP11B Rabbit pAb (A16587) at 1:500 dilution.  
Secondary antibody: HRP-conjugated Goat anti-Rabbit IgG (H+L) (AS014) at 1:10000 dilution.  
Lysates/proteins: 25µg per lane.  
Blocking buffer: 3% nonfat dry milk in TBST.  
Detection: ECL Basic Kit (RM00020).  
Exposure time: 2s.